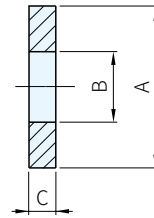
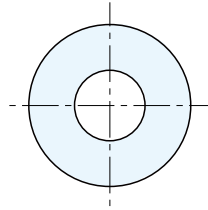


RoHS



鋼		
材質	處理	硬度
鋼	熱處理、染黑	HRC32~37

品號	A	B	C	適用螺桿	庫存
STJ-10	22	10.3	4	M10	•
STJ-12	30	13	6	M12	•
STJ-14	30	15	8	M14	•
STJ-16	35	16.5	10	M16	•
STJ-20	38	20.5	10	M20	•
STJ-22	45	23	10	M22	•
STJ-24	50	26	12	M24	•

 訂貨： 交期：

STJ-10