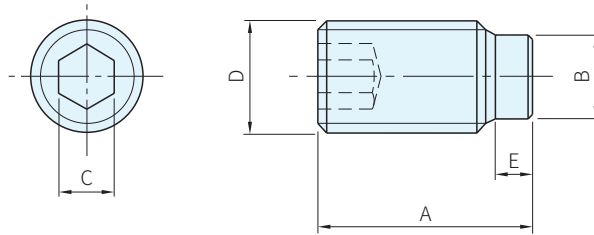




本體			頭部
材質	處理	硬度	材質
鋼	染黑	HRC39~44	POM
SUS303	-	-	POM



鋼 品號	質量 g	庫存	不銹鋼 品號	質量 g	庫存	A ≈	B	C		D	E ≈
								鋼	不銹鋼		
22760.0242	0.3	•	22760.0642	0.5	•	7	2	1.5	1.5	M4×0.7	1
22760.0243	0.4	•	22760.0643	0.5	•	9					
22760.0244	0.6	•	22760.0644	0.6	•	11					
22760.0245	0.7	•	22760.0645	0.7	•	13					
22760.0246	1	•	22760.0646	1.1	•	17					
22760.0247	1.3	•	-	-	-	21	3	2.5	2.5	M5×0.8	1
22760.0252	0.7	•	22760.0652	0.7	•	9					
22760.0253	0.8	•	22760.0653	0.9	•	11					
22760.0254	1	•	22760.0654	1.2	•	13					
22760.0255	1.5	•	22760.0655	1.6	•	17					
22760.0256	2	•	22760.0656	2.2	•	21					
22760.0257	2.6	•	-	-	-	26					
22760.0262	1.2	•	22760.0662	1.3	•	11.3	3.5	3	3	M6×1	1.3
22760.0263	1.5	•	22760.0663	1.7	•	13.3					
22760.0264	2.2	•	22760.0664	2.2	•	17.3					
22760.0265	2.8	•	22760.0665	3	•	21.3					
22760.0266	3.8	•	22760.0666	3.8	•	26.3					
22760.0267	4.9	•	22760.0667	5.1	•	33.3					
22760.0268	6.3	•	-	-	-	41.3					
22760.0270	7.9	•	-	-	-	51.3	5	4	4	M8×1.25	1.6
22760.0282	2.4	•	22760.0682	2.5	•	13.6					
22760.0283	3.6	•	22760.0683	3.7	•	17.6					

訂貨： 交期： 天

22760.0242

鋼 品號	質量 g	庫存	不銹鋼 品號	質量 g	庫存	A ≈	B	C		D	E ≈
								鋼	不銹鋼		
22760.0284	5	•	22760.0684	5	•	21.6	5	4	4	M8×1.25	1.6
22760.0285	6.4	•	22760.0685	6.5	•	26.6					
22760.0286	8.5	•	22760.0686	8.8	•	33.6					
22760.0287	11	•	22760.0687	11	•	41.6					
22760.0288	14	•	-	-		51.6					
22760.0290	18	•	-	-		64.6					
22760.0302	5.2	•	22760.0702	5.4	•	17.9	6.5	5	5	M10×1.5	1.9
22760.0303	7.1	•	22760.0703	7.2	•	21.9					
22760.0304	9.9	•	22760.0704	9.9	•	26.9					
22760.0305	13	•	22760.0705	13	•	33.9					
22760.0306	17	•	22760.0706	17	•	41.9					
22760.0307	22	•	22760.0707	22	•	51.9					
22760.0308	28	•	-	-		64.9	8	6	6	M12×1.75	2.1
22760.0310	36	•	-	-		81.9					
22760.0322	9	•	22760.0722	9.1	•	22.1					
22760.0323	13	•	22760.0723	13	•	27.1					
22760.0324	19	•	22760.0724	18	•	34.1					
22760.0325	24	•	22760.0725	23	•	42.1					
22760.0326	31	•	22760.0726	30	•	52.1					
22760.0327	40	•	22760.0727	40	•	65.1	82.1				
22760.0330	53	•	-	-		82.1					
22760.0332	66	•	-	-		102.1					

特長

- ・ 不壓傷工件的塑膠頭設計
- ・ 使用溫度範圍：-30~+80°C

Ex. 使用例