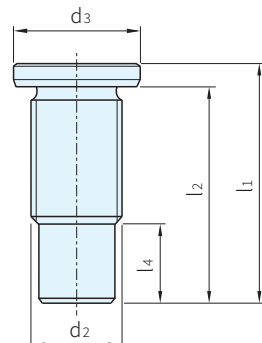
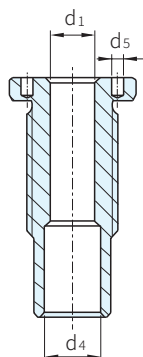
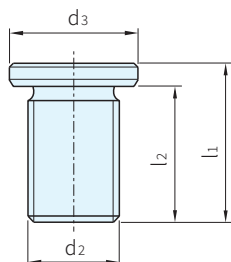
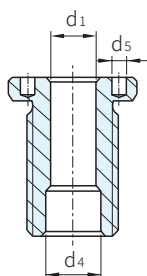
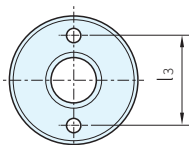




材質	處理
SUS 630	析出硬化



尺寸：M16/M16×1.5/M20
M20×1.5/M24×1.5
M30×2

尺寸：M24/M30/M36×2

品號	d ₁ H11	d ₂	公稱長度	d ₃ -0.2	d ₄ +0.3	d ₅ +0.1	l ₁	l ₂	l ₃	l ₄	鎖附扭力 max. (Nm)	x ¹⁾	負載荷重 ¹⁾			搭配 定位扣件	質量 (g)	庫存
													F ₁	F ₂	F ₃			
22350.1900	8	M16×1.5	10	24	9.8	3.1	25	20	16		75	1.5	1.2	0.5	22350.0601/.0701	31	△	
22350.1902			15												22350.0602/.0702	32	△	
22350.1904		M16	25				35	30							40	22350.0604/.0704	41	△
22350.1906			35				45	40							22350.0606/.0706	49	△	
22350.1910	10	M20×1.5	15	28	12.2	30	24	20		100	2.7	2.4	2.1	22350.0621/.0721	55	△		
22350.1912			25											35	29	22350.0623/.0723	64	△
22350.1914		M20	35			45	39							22350.0625/.0725	70	△		
22350.1916			50			60	54							22350.0627/.0727	93	△		
22350.1920	12	M24×1.5	15	32	14.7	32	26	22	3.8	150	3.5	3.2	2.8	22350.0631/.0731	80	△		
22350.1922			25											40	34	22350.0633/.0733	94	△
22350.1924		M24	35			50	44							22350.0635/.0735	116	△		
22350.1926			50			65	59							22350.0637/.0737	130	△		
22350.1930	16	M30×2	25	39	19.2	45	39	30	6.0	200	4.8	4.5	4.1	22350.0641/.0741	163	△		
22350.1934			50											65	59	22350.0643/.0743	201	△
22350.1936		M30	75			90	84							22350.0645/.0745	248	△		
22350.1954			50			70	63							22350.0673/.0773	341	△		
22350.1956	20	M36×2	50	43	26.0	70	63	30	3.5	200	10.0	8.5	6.5	22350.0675/.0775	413	△		
22350.1956			75			95	88		28.5									

• 1)5倍安全係數

訂貨： 交期： 天

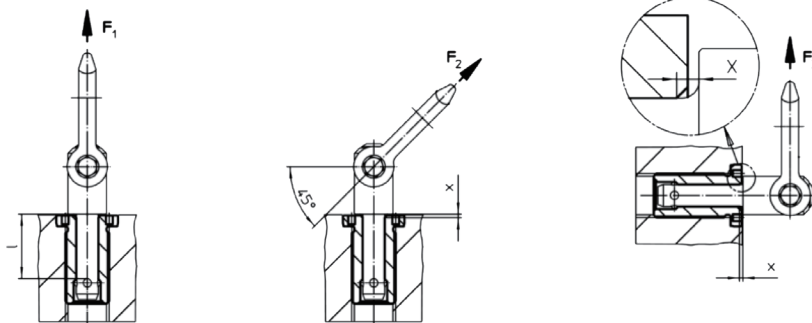
22350.1900

SP 特長



- 可快速和安全地與定位扣件22350搭配
- 此平頭設計在嵌裝後，可與工作表面齊平
- 產品抗磨且耐腐蝕

Wa 注意

- 組裝
- 可嵌裝於盲孔中
 - 可搭配螺帽使用，以嵌裝於薄板

EX 使用例

鎖附工具

可調整雙銷扳手	品號	d1	雙銷間距 ±0.1	銷直徑 - 0.1	方形起子 (inch)	質量 (g)	庫存
	22350.1990	8	-	3	-	121	△
	22350.1991	10/12/16 20/25	-	5	-	309	△
套筒雙銷扳手							
	22350.1995	8	16	3	1/2	116	△
	22350.1996	10	20			136	
	22350.1997	12	22			185	
	22350.1998	16/20	30	5		243	△

Wa 注意

- 可調整雙銷扳手及套筒雙銷扳手需另購

訂貨： 交期： 天
22350.1990