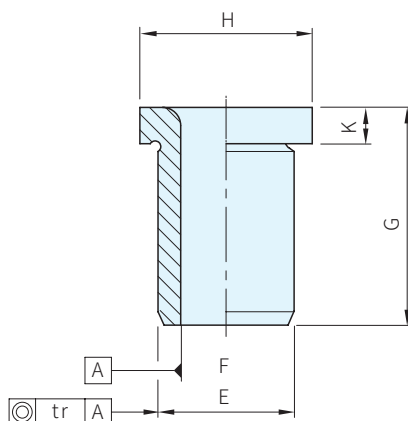




材質	硬度
鋼	HRC58~62



品號	庫存	E n6		F F7		G	H	K
SGR172-0102	•	5	+0.016 +0.008	2	+0.016 +0.006	6	8	2.0
SGR172-0104	•					9		
SGR172-0106	•	6	+0.016 +0.008	3	+0.016 +0.006	8	9	2.5
SGR172-0108	•					12		
SGR172-0110	•	7	+0.019 +0.010	4	+0.022 +0.010	8	10	2.5
SGR172-0112	•					12		
SGR172-0114	•	8	+0.019 +0.010	5	+0.022 +0.010	8	11	2.5
SGR172-0116	•					12		
SGR172-0118	•	10	+0.019 +0.010	6	+0.022 +0.010	10	13	3.0
SGR172-0120	•					16		
SGR172-0122	•	12	+0.023 +0.012	8	+0.028 +0.013	10	15	3.0
SGR172-0124	•					16		
SGR172-0126	•	15	+0.023 +0.012	10	+0.028 +0.013	12	18	3.0
SGR172-0128	•					20		
SGR172-0130	•	18	+0.023 +0.012	12	+0.034 +0.016	12	22	4.0
SGR172-0132	•					20		
SGR172-0134	•	26	+0.028 +0.015	16	+0.034 +0.016	16	30	4.0
SGR172-0136	•					28		

**Wa. 注意**

- SGR179和SGR172襯套F<5，tr=0.01；  
F>5，tr=0.02

 訂貨：  交期：  

SGR172-0102

**Ps. 備註**

- 本產品尺寸公差符合DIN172
- SGR179和SGR172建議和SGR771.1定位銷配合使用
- E公差n6可配合孔公差H7成壓配組立