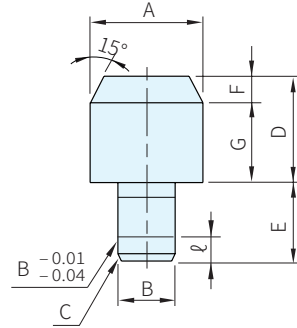




A 固定	A 指定	A,E,D 指定	材質	硬度 HRC
22630.23	22630.27	22630.31	SUJ2	58~62
22630.24	22630.28	22630.32		-
22630.25	22630.29	22630.33	SUS304	-
22630.26	22630.30	22630.34	SUS420	45~50

A 公差表

A	g6
>5.50~ 6.00	-0.004 -0.012
>6.00~10.00	-0.005 -0.014
>10.00~18.00	-0.006 -0.017
>18.00~30.00	-0.007 -0.020



A 固定型 Type	B n6	Ag6 選擇	E $0_{-0.28}$	D $+0.28_0$	C	F	ℓ	G			
22630.23 22630.24 22630.25 22630.26	1	2	3	3.5	0.1	0.5	0	3			
	2	+0.010 3, 4	4	4	0.5	1					
	3	+0.004 4, 5, 6	5	7		2					
	4	+0.016 +0.008 6, 8	5, 6	10	9	1	3	1.2	6		
	5		8, 10							11	
	6	+0.019 +0.010 10, 12, 13	12, 13, 15	15	12	1.5	4	2.2	8		
	8									13, 15, 16	14
	10									15, 16	
	12	+0.023 +0.012 15, 16	20, 25	22	15	3	5	3.5	10		
	13	20, 25									
16	+0.028 +0.015 25, 30	30	20	3	5	15					

A 指定型 Type	B n6	Ag6 指定單位0.01mm	E $0_{-0.28}$	D $+0.28_0$	C	F	ℓ	G			
22630.27 22630.28 22630.29 22630.30	1	1.25~ 2.50	3	3.5	0.1	0.5	0	3			
	2	+0.010 2.40~ 4.00	4	4	0.5	1					
	3	+0.004 3.40~ 6.00	5	7		2					
	4	+0.016 +0.008 5.40~ 8.00	4.40~ 7.00	10	9	1	3	1.2	6		
	5		6.40~10.00							11	
	6	+0.019 +0.010 9.00~13.00	11.00~15.00	15	12	1.5	4	2.2	8		
	8									13.00~16.00	14
	10									14.00~18.00	
	12	+0.023 +0.012 17.00~25.00	17.00~25.00	22	15	3	5	3.5	10		
	13	22.00~30.00									
16	+0.028 +0.015 22.00~30.00	30	20	3	5	15					

A, E, D 指定型 Type	B n6	Ag6 指定單位0.01mm	E $0_{-0.28}$ 指定單位1mm	D $+0.28_0$ 指定單位0.1mm	C	F	ℓ			
22630.31 22630.32 22630.33 22630.34	1	1.45~ 2.50	2, 3	1.0~ 5.0	0.1	0.5	0			
	2	+0.010 2.40~ 4.00	2~ 6	2.0~ 6.0	0.5	1				
	3	+0.004 3.40~ 6.00	3~ 6	3.0~ 8.0		2				
	4	+0.016 +0.008 4.40~ 7.00	4.40~ 7.00	4~ 8	4.0~10.0	1	3	1.2		
	5		5.40~ 8.00	5~10						
	6	+0.019 +0.010 8.50~13.00	6.40~10.00	6~12	4.0~12.0	1.5	4	2.2		
	8								10.50~15.00	12~24
	10								12.50~16.00	
	12	+0.023 +0.012 13.50~18.00	16.50~25.00	13~26	5.0~20.0	2	4	3.5		
	13	16.50~25.00								
16	+0.028 +0.015 21.00~30.00	21.00~30.00	20~40	6.0~20.0	3	5				

特長

- ・可作為精密孔的定位
- ・本產品尺寸公差符合DIN6321

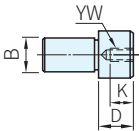
訂貨： TYPE - B - A - E - D 交期： 10 天

22630.23 - 6 - 8  
22630.27 - 8 - A12.00  
22630.31 - 10 - A12.00 - E10 - D8.5

**Wa** 注意

· 特殊尺寸、公差、歡迎和本公司洽詢

**追加** 追加修改

變更	攻牙加工													
														
Code	YW													
Spec.	<p>攻牙加工[指定方法] YW</p> <p>· 適用於 B≥6</p> <table border="1"> <thead> <tr> <th>B</th> <th>YW(粗螺紋)</th> <th>K</th> </tr> </thead> <tbody> <tr> <td>6</td> <td>M3×0.5</td> <td>5</td> </tr> <tr> <td>8</td> <td>M4×0.7</td> <td>6</td> </tr> <tr> <td>10</td> <td rowspan="2">M5×0.8</td> <td rowspan="2">10</td> </tr> <tr> <td>12</td> </tr> </tbody> </table>	B	YW(粗螺紋)	K	6	M3×0.5	5	8	M4×0.7	6	10	M5×0.8	10	12
B	YW(粗螺紋)	K												
6	M3×0.5	5												
8	M4×0.7	6												
10	M5×0.8	10												
12														
庫存	△													

修改加工：  -  -  -  -  - (YW)  
22630.31 - 10 - A14.50 - E16 - D5.0 - YW

交期：  天