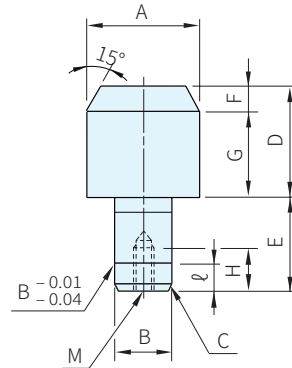




A 固定	A 指定	A,E,D 指定	材質	硬度 HRC
22630.35	22630.38	22630.42	SUJ2	58~62
-	22630.39	-		-
22630.36	22630.40	22630.43	SUS304	-
22630.37	22630.41	22630.58	SUS420	45~50

A 公差表

A	g6
>5.50~ 6.00	-0.004 -0.012
>6.00~10.00	-0.005 -0.014
>10.00~18.00	-0.006 -0.017
>18.00~30.00	-0.007 -0.020



A 固定型 Type	B n6		A _{g6} 選擇	E _{-0.28} ⁰	D ₀ ^{+0.28}	F	M	H	ℓ	G	C
22630.35 22630.36 22630.37	6	+0.016 +0.008	8, 10	10	11	3	M3×0.5	5	1.2	8	0.6
	8	+0.019 +0.010	10, 12, 13								
	10		12, 13, 15	22	15	5	M8×1.25	12	3.5	15	1.5
	12	+0.023 +0.012	13, 15, 16								
	13		15, 16								
	16		20, 25								
	20	+0.028 +0.015	30								

A 指定型 Type	B n6		A 指定單位0.01mm	E _{-0.28} ⁰	D ₀ ^{+0.28}	F	M	H	ℓ	G	C
22630.38 22630.39 22630.40 22630.41	5	+0.016 +0.008	5.50~ 8.00	10	9	3	M2×0.4 M3×0.5	3 5	1.2	6 8	0.6 1.2
	6		6.50~10.00								
	8	+0.019 +0.010	9.00~13.00	22	14	5	M8×1.25	12	3.5	15	2.5
	10		11.00~15.00								
	12	+0.023 +0.012	13.00~16.00								
	13		14.00~18.00								
	16		17.00~25.00								
	20	+0.028 +0.015	22.00~30.00								

A,E,D 指定型 Type	B n6		A 指定單位0.01mm	E _{-0.28} ⁰ 指定單位1mm	D ₀ ^{+0.28} 指定單位0.1mm	F	M	H	ℓ	C
22630.42 22630.43 22630.58	5	+0.016 +0.008	5.50~ 8.00	5~10	4.0~10.0	3	M2×0.4 M3×0.5	3 5	1.2	0.6
	6		6.50~10.00	6~12						
	8	+0.019 +0.010	9.00~13.00	8~16	5.0~20.0	5	M8×1.25	12	3.5	2.5
	10		11.00~15.00	10~20						
	12	+0.023 +0.012	13.00~16.00	12~24						
	13		14.00~18.00	13~26						
	16		17.00~25.00	16~32						
	20	+0.028 +0.015	22.00~30.00	20~40						

Wa 注意

- ・請確認下孔深度，孔可能會貫穿
- ・特殊尺寸、公差、歡迎和本公司洽詢
- ・本產品尺寸公差符合DIN6321

訂貨： TYPE - B - A - E - D 交期： 10 天

22630.35 - 6 - 10
22630.38 - 10 - A12.00
22630.42 - 10 - A12.00 - E12 - D8.2