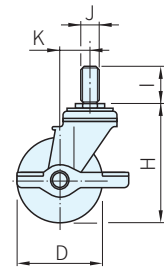
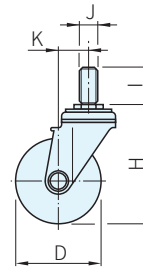
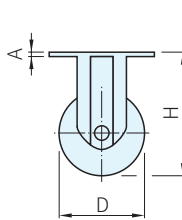
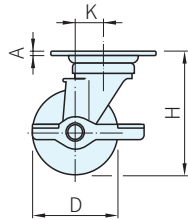
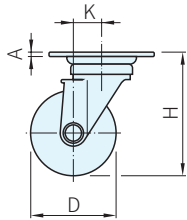
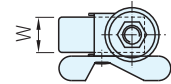
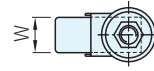
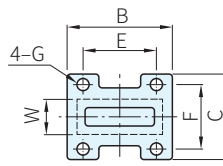
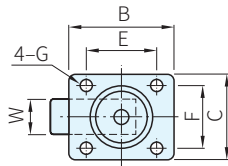
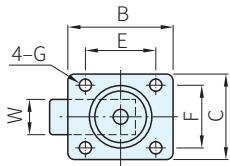




腳架		輪軸	輪子	
材質	處理	型式	材質	顏色
鋼	鍍鋅	尼龍套筒	塑膠(P)	白



活動輪

側剎輪

固定輪

螺絲活動輪

螺絲側剎輪

Type	品號	輪子 材質	D	W	A	B	C	E	F	G	H	I	J	偏芯 K	載重量 (N)	質量 (g)	庫存
活動輪	5580.3150	P	75	25	3	70	58	55	42	8.5	98	-	-	27	500	380	•
側剎輪	5580.3250													410		•	
固定輪	5580.3350													-		230	•
螺絲活動輪	5580.3450				-	-	-	-	-	101	32	3/8"-16	27	300		•	
螺絲側剎輪	5580.3550				-	-	-	-	-	-	-	-	-	-		330	•

Te. 技術資料

· 請參考本單元(腳輪的選擇)

Ps. 備註

· 1N=0.101972Kgf

訂貨： - 交期：

5580.3150 - P