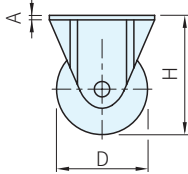
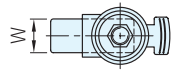
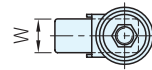
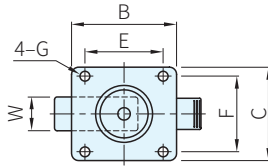
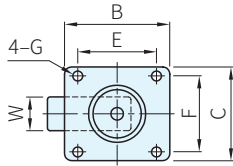
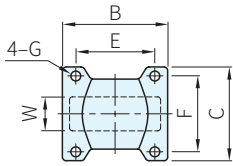
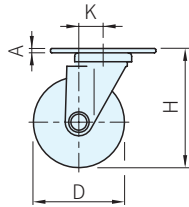




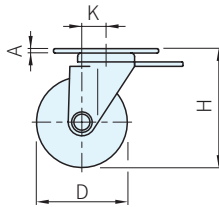
腳架		輪軸	輪子
材質	處理	型式	材質
鋼	鍍鋅	培林	合成橡膠(PR)(灰) 優力膠(U)(草綠) 導電橡膠(E)(黑灰)



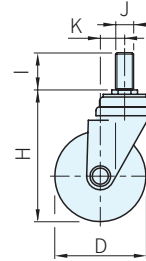
固定輪



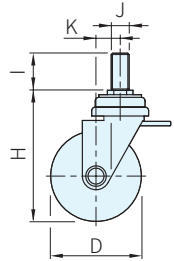
活動輪



剎車輪



螺絲活動輪



螺絲剎車輪

Type	品號	輪子材質	D	W	A	B	C	E	F	G	H	I	J	偏芯 K	載重量 (N)	庫存		
																PR	U	E
固定輪	5533.1030	PR U E	100	31	3	93	75	72	53	10	132	-	-	39	700	•	•	△
活動輪	5533.1033															•	•	△
剎車輪	5533.1003															•	•	△
螺絲活動輪	5533.1010				•	•	△											
螺絲剎車輪	5533.1012				•	•	△											
固定輪	5533.1230				PR U E	125	31	3	93	75	72	53	10			157	-	-
活動輪	5533.1233	•	•	△														
剎車輪	5533.1253	•	•	△														
螺絲活動輪	5533.1210	•	•	△														
螺絲剎車輪	5533.1212	•	•	△														
														160	30	M12		

Ps. 備註

· 1N=0.101972Kgf

訂貨： - 交期： 天 ·

5533.1030 - PR

天 △