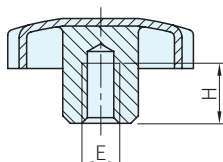
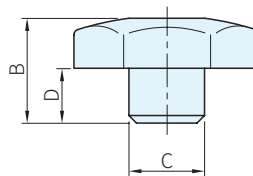
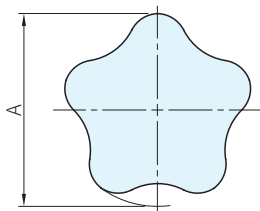




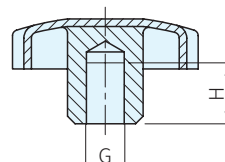
材質	處理
SUS304	噴砂



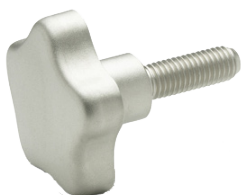
母牙、內圓孔



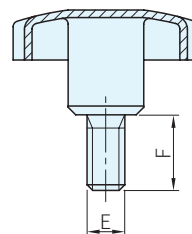
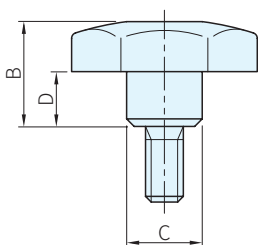
母牙



內圓孔



公牙



品號	備註	A	B	C	D	E	F	G	H	質量 g	庫存
SGR5334-0440	母牙	40	25	14	12.5	M8×1.25	-	8	15	37	•
SGR5334-0450		50	32	18	17.5	M10×1.5		10	18	67	•
SGR5334-0460		60	40	20	21.0	M12×1.75		12	22	104	•
SGR5334-0240	內圓孔	40	25	14	12.5	M8×1.25	-	8	15	37	•
SGR5334-0250		50	32	18	17.5	M10×1.5		10	18	67	•
SGR5334-0260		60	40	20	21.0	M12×1.75		12	22	104	•
SGR5334-0140	公牙	40	24.0	14	12.0	M8×1.25	20	-	-	50	•
SGR5334-0142							30			55	•
SGR5334-0144							40			56	•
SGR5334-0150		20	95	•							
SGR5334-0152		50	30.0	18	16.5	M10×1.5	30			97	•
SGR5334-0154							40			100	•
SGR5334-0160							30			155	•
SGR5334-0162		60	37.5	20	20.0	M12×1.75	40			162	•
SGR5334-0164							50			169	•

**WA) 注意**

- 把手以沖壓引伸成形
- 中心軸、公牙以焊接結合

訂貨：  交期：  天

SGR5334-0240