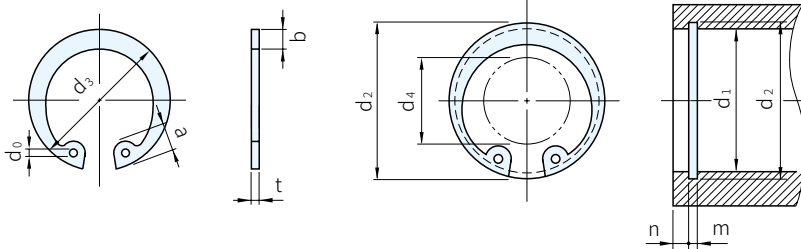




鋼			不銹鋼
材質	處理	硬度	材質
彈簧鋼	染黑	HRC44~52	SUS420



鋼		不銹鋼		NO.	扣環					適用軸					數量/袋			
品號	庫存	品號	庫存		d <sub>3</sub>	t	b	a	d <sub>0</sub>	d <sub>4</sub>	d <sub>1</sub>	d <sub>2</sub>	m	n	鋼	不銹鋼		
散裝	袋裝	散裝	袋裝	公差	公差			min.			公差	公差	min.					
5508.061	CAP-5508.061	·		6	6.7	0.4	±0.03	0.7	1.6	0.8	2.5	6	6.25	0.50	+0.1 0	0.5	5000	
5508.071	CAP-5508.071	·		7	7.7			0.8	1.7		3.0	7	7.30					
5508.081	CAP-5508.081	·		8	8.8			0.9	1.7		3.5	8	8.40					
5508.091	CAP-5508.091	·		9	9.8	0.6	±0.04	1.1	2.2	1.2	4.0	9	9.40	0.70	0.6	2000		
5508.101	CAP-5508.101	·	5508.100	CAP-5508.100	·			10	10.7		1.5	3.0	10				10.40	
5508.111	CAP-5508.111	·			11			11.8	1.7		3.1	1.5	5.0				12	12.50
5508.121	CAP-5508.121	·	5508.120	CAP-5508.120	·	12	13.0	1.0	±0.05	1.7	6.0	13	13.60	+0.11 0	1.5	2000		
5508.131	CAP-5508.131	·			13	14.1	3.6				8.0	15	15.70					
5508.141	CAP-5508.141	·			14	15.1	3.7				8.0	16	16.80					
5508.151	CAP-5508.151	·	5508.150	CAP-5508.150	·	15	16.2	3.8	9.0	17	17.80	1.15	1.5	1000				
5508.161	CAP-5508.161	·			16	17.3	2.4	10.0	18	19.00								
5508.171	CAP-5508.171	·			17	18.3	4.0	11.0	19	20.00								
5508.181	CAP-5508.181	·			18	19.5	±0.2	2.5	4.1	2.0	12.0	21	22.00	+0.21 0	1.35	500		
5508.191	CAP-5508.191	·	5508.190	CAP-5508.190	·	19					20.5	4.3	15.0				24	25.20
5508.201	CAP-5508.201	·			20	21.5					4.4	16.0	25				26.20	
5508.211	CAP-5508.211	·	5508.210	CAP-5508.210	·	21	22.5	1.2	3.0	4.6	13.0	22	23.00	+0.14 0	2.0	500		
5508.221	CAP-5508.221	·			22	23.5	4.7				16.0	26	27.20					
5508.241	CAP-5508.241	·	5508.240	CAP-5508.240	·	24	25.9				20.0	30	31.40					
5508.251	CAP-5508.251	·			25	26.9	±0.06	3.5	5.2	2.5	21.0	32	33.70	1.65	500			
5508.261	CAP-5508.261	·			26	27.9					23.0	34	35.70					
5508.281	CAP-5508.281	·	5508.280	CAP-5508.280	·	28					30.1	24.0	35			37.00		
5508.301	CAP-5508.301	·			30	32.1	1.5	4.0	5.3	2.5	25.0	36	38.00	+0.25 0	1.90	500		
5508.321	CAP-5508.321	·	5508.320	CAP-5508.320	·	32					34.4	26.0	37				39.00	
5508.341	CAP-5508.341	·			34	36.5					27.0	38	40.00					
5508.351	CAP-5508.351	·			35	37.8	±0.4	1.75	5.4	2.5	27.0	39	41.20	2.0	200			
5508.361	CAP-5508.361	·			36	38.8					5.7	28.0	40			42.50		
5508.371	CAP-5508.371	·			37	39.8					5.8	30.0	42			44.50		
5508.381	CAP-5508.381	·			38	40.8	±0.07	4.5	6.1	2.0	33.0	45	47.50	+0.3 0	2.20	200		
5508.391	CAP-5508.391	·			39	42.0					5.0	33.0	46				48.50	
5508.401	CAP-5508.401	·	5508.400	CAP-5508.400	·	40					43.5	34.0	47				49.50	
5508.421	CAP-5508.421	·	5508.420	CAP-5508.420	·	42	45.5	±0.45	6.5	2.0	35.0	48	50.50	200				
5508.451	CAP-5508.451	·	5508.450	CAP-5508.450	·	45	48.5				37.0	50	53.00					
5508.461	CAP-5508.461	·			46	49.7	39.0				52	55.00						
5508.471	CAP-5508.471	·	5508.470	CAP-5508.470	·	47	50.5	2.0	5.1	2.0	41.0	55	58.00	200				
5508.481	CAP-5508.481	·			48	51.5	42.0				56	59.00						
5508.501	CAP-5508.501	·			50	54.2	44.0				58	61.00						
5508.521	CAP-5508.521	·	5508.520	CAP-5508.520	·	52	56.2	±0.3	6.6	2.0	46.0	60	63.00	200				
5508.551	CAP-5508.551	·	5508.550	CAP-5508.550	·	55	59.2				44.0	58	61.00					
5508.561	CAP-5508.561	·			56	60.2	46.0				60	63.00						
5508.581	CAP-5508.581	·			58	62.2	±0.45	5.5	6.8	2.0	2.20	200						
5508.601	CAP-5508.601	·	5508.600	CAP-5508.600	·	60							64.2					

鋼			不銹鋼			NO.	扣環					適用軸					數量/袋	
品號		庫存	品號		庫存		d <sub>3</sub> 公差	t 公差	b	a	d <sub>0</sub> min.	d <sub>4</sub>	d <sub>1</sub>	d <sub>2</sub> 公差	m 公差	n min.	鋼	不銹鋼
散裝	袋裝		散裝	袋裝														
5508.621	CAP-5508.621	·			62	66.2	2.0	±0.07	5.5	6.9		48	62	65.0	2.2		2.0	200
5508.631	CAP-5508.631	·			63	67.2						49	63	66.0				
5508.651	CAP-5508.651	·			65	69.2	±0.45											
5508.681	CAP-5508.681	·			68	72.5												
5508.701	CAP-5508.701	·			70	74.5	2.5	±0.08										
5508.721	CAP-5508.721	·			72	76.5												
5508.751	CAP-5508.751	·			75	79.5												
5508.781	CAP-5508.781	·			78	82.5												
5508.801	CAP-5508.801	·			80	85.5												
5508.821	CAP-5508.821	·			82	87.5												
5508.851	CAP-5508.851	·			85	90.5												
5508.881	CAP-5508.881	·			88	93.5												
5508.901	CAP-5508.901	·			90	95.5	±0.55											
5508.921	CAP-5508.921	·			92	97.5												
5508.951	CAP-5508.951	·			95	100.5												
5508.1001	CAP-5508.1001	·			100	105.5												
5508.1021	CAP-5508.1021	·			102	108.0												
5508.1051	CAP-5508.1051	·			105	112.0												
5508.1081	CAP-5508.1081	·			108	115.0												
5508.1101	CAP-5508.1101	·			110	117.0												
5508.1151	CAP-5508.1151	·			115	122.0												
5508.1201	CAP-5508.1201	·			120	127.0												
5508.1251	CAP-5508.1251	·			125	132.0												
5508.1301	CAP-5508.1301	·			130	137.0												
5508.1351	CAP-5508.1351	·			135	142.0												
5508.1401	CAP-5508.1401	·			140	147.0												
5508.1451	CAP-5508.1451	·			145	152.0	4.0											
5508.1501	CAP-5508.1501	·			150	158.0												
5508.1551	CAP-5508.1551	·			155	164.0												
5508.1601	CAP-5508.1601	·			160	169.0												
5508.1651	CAP-5508.1651	·			165	174.5												
5508.1701	CAP-5508.1701	·			170	179.5												
5508.1751	CAP-5508.1751	·			175	184.5												
5508.1801	CAP-5508.1801	·			180	189.5												
5508.1851	CAP-5508.1851	·			185	194.5												
5508.1901	CAP-5508.1901	·			190	199.5												
5508.1951	CAP-5508.1951	·			195	204.5	±1.44 -0.72											
5508.2001	CAP-5508.2001	·			200	209.5												
5508.2101	CAP-5508.2101	·			210	222.0												
5508.2201	CAP-5508.2201	·			220	232.0												
5508.2301	CAP-5508.2301	·			230	242.0												
5508.2401	CAP-5508.2401	·			240	252.0												
5508.2501	CAP-5508.2501	·			250	262.0	5.0	±0.15										
5508.2601	CAP-5508.2601	·			260	275.0												
5508.2701	CAP-5508.2701	·			270	285.0	±1.62 -0.81											
5508.2801	CAP-5508.2801	·			280	295.0												
5508.2901	CAP-5508.2901	·			290	305.0												
5508.3001	CAP-5508.3001	·			300	315.0												

備註

- 孔用C型扣環拆裝工具請參考本單元HB、HS
- 目錄以外尺寸歡迎洽詢
- 不銹鋼產品缺貨時交期較久，請提前訂貨
- 無庫存品號請洽詢
- 袋裝訂貨，經濟實惠

訂貨：  交期：  天 ·

5508.621

CAP-5508.621

天 袋裝