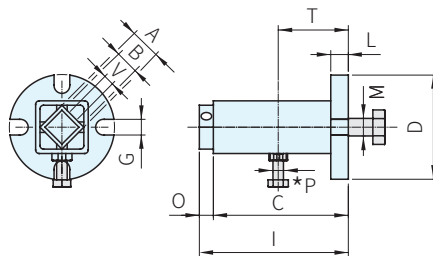
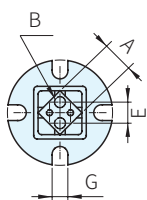


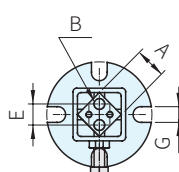
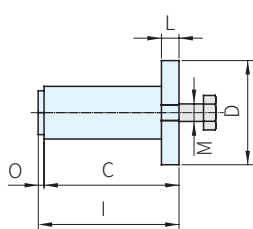
TC-CET



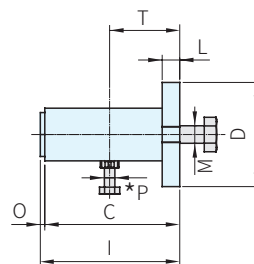
TC-CETP



TC-CEP



TC-CEPP



Type	本體			入子	彈性體
	材質	處理	顏色	材質	材質
TC-CET/TC-CETP	FCD400	塗裝	灰	鋁合金 (A6060)	橡膠
TC-CEP/TC-CEPP					

標準型 品號	預負荷型 品號	A	B	C	D	G	I	L	M	O	*P	T	V	Nm(0°~30°) Q(扭矩)		質量 (kg)	庫存
TC-CET10	TC-CETP10	11	8 ^{+0.15} _{+0.00}	44	40	7	52	6	M6		M4	25		0~6.8	0.16	△	
TC-CET20	TC-CETP20	15	11 ^{+0.15} _{+0.00}	56	50	9	64	8	M8	8	M6	35	M6	0~13.6	0.30	△	
TC-CET30	TC-CETP30	18	12 ^{+0.15} _{+0.00}	69	60		77	10	M10			40		0~34.0	0.46	△	
TC-CET40	TC-CETP40	27	22 ^{+0.15} _{+0.00}	96	80		11	106	15	M12		10	M8	60	M8	0~103.0	1.40
TC-CET50	TC-CETP50	38	30 ^{+0.15} _{+0.00}	125	100	13	135		M16			80		0~280.0	2.50	△	
TC-CET60	TC-CETP60	45	35 ^{+0.15} _{+0.00}	182	120		196	18	M20	14	M10	115	M10		0~574.0	4.30	△
TC-CET70	TC-CETP70	50	40 ^{+0.15} _{+0.00}	180	130		17	195	20	M24	15		M12			0~987.5	5.50

標準型 品號	預負荷型 品號	A	B	C	D	E	G	I	L	M	O	*P	T	Nm(0°~30°) Q(扭矩)		質量 (kg)	庫存
TC-CEP20	TC-CEPP20	15	M6×15	56	50	10	9	57	8	M8	1	M6	35	0~13.6	0.30	△	
TC-CEP30	TC-CEPP30	18		69	60	12		70	10	M10			40	0~34.0	0.46	△	
TC-CEP40	TC-CEPP40	27		M10×30	96	80		20	11	97			15	M12	60	0~103.0	1.40
TC-CEP50	TC-CEPP50	40	M12×30	125	100	25	13	126		M16	2	M8	80	0~280.0	2.50	△	
TC-CEP60	TC-CEPP60	45	M14×35	182	120	35		184	18	M20			M10	115	0~574.0	4.30	△
TC-CEP70	TC-CEPP70	50	M12×40	180	130	40		182	20	M24			M12			0~987.5	5.50

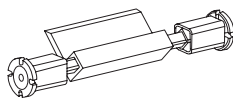
PS. 備註

- TC-CET和TC-CETP是與方形部件配合使用的彈性支撐
- TC-CEP和TC-CEPP是螺栓與特定機械結構配合使用的彈性支撐
- 配有預加負荷系統(*)
- 扭轉角度±30°
- 工作溫度從-40°C到+80°C

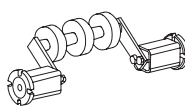
Ex. 使用例

訂貨： 交期：

TC-CET10



TC-CET50



TC-CEP50