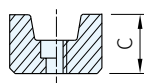
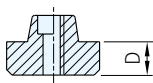
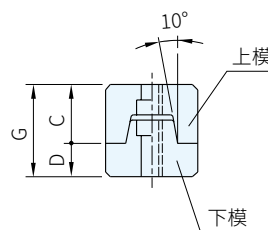
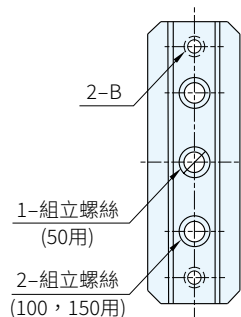
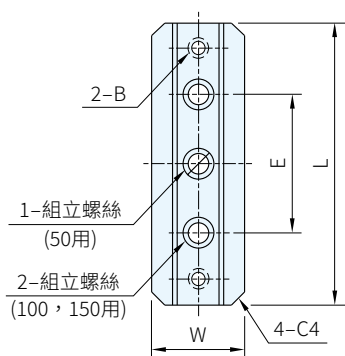




材質	硬度
SK2	HRC54~58

下模

上模



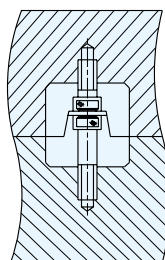
品號	L ⁺⁰ _{-0.1}	W ⁺⁰ _{-0.01}	E _{±0.2}	D	C _{±0.005}	G	組立螺絲	B	單價
KYA-50	50	25	-	7.5	17.5	25	M5	M5	·
KYA-100	100	30	60	10	22	32	M6	M6	·
KYA-150	150	40	100	13	25	38	M8	M8	·

品號	L ⁺⁰ _{-0.1}	W ⁺⁰ _{-0.01}	E _{±0.2}	D	C _{±0.005}	G	組立螺絲	B	單價
KYB-50	50.29	25.36	-	7.92	17.53	25.45	3/16-24	3/16-24	·
KYB-100	101.09	31.71	63.5	9.53	22.1	31.63	1/4-20	1/4-20	·
KYB-150	151.89	38.06	101.6	12.7	25.4	38.1	5/16-18	5/16-18	·

SP 特長

- 平行度&垂直度±0.005mm
- 保持塑膠模座精度

EX 使用例&加工圖



訂貨： 交期：

KYA-50