

RoHS



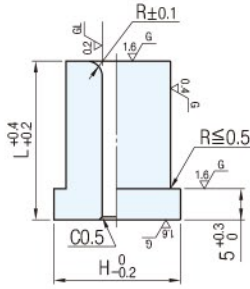
肩型



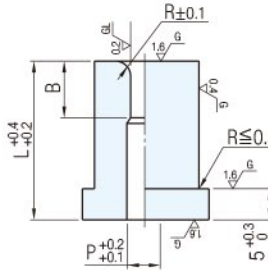
直軸型

TYPE		材質	硬度
肩型	直軸型		
AGW2P	APW2P	超微粒子 (HIP)	90~92HRA
AGW2W	APW2W		
AGW2T	APW2T		
AGT2P	APT2P	V40 (HIP)	87~88HRA
AGT2W	APT2W		
AGT2T	APT2T		

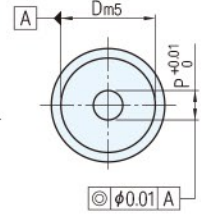
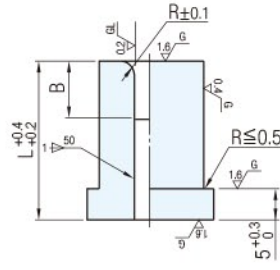
AGW2P  
AGT2P



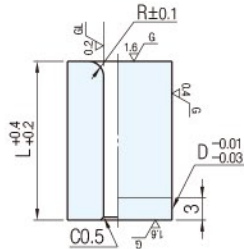
AGW2W  
AGT2W



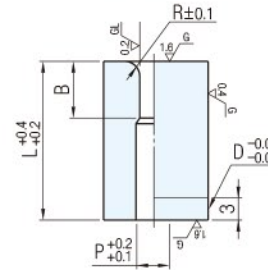
AGW2T  
AGT2T



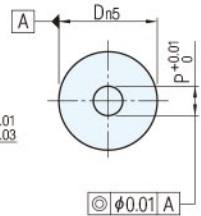
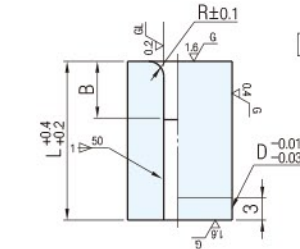
APW2P  
APT2P



APW2W  
APT2W



APW2T  
APT2T










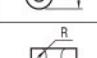
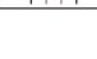
Catalog No.		L	指定單位0.01mm		指定單位1mm	指定單位0.1mm	H			
TYPE	D		min.	max.	B	R				
AGW2P APW2P	6	16	2.20 ~ 3.00		-	$0.2 \sim \frac{D-P-2}{2}$	9			
	8		2.50 ~ 4.00				11			
	10		3.00 ~ 5.00				13			
	13		4.00 ~ 6.50				16			
	16		5.00 ~ 8.00				19			
	20		8.00 ~ 10.00				23			
AGT2P APT2P	25	25	10.00 ~ 12.50			28				
AGW2W APW2W AGW2T APW2T	6	16	2.20 ~ 3.00		B ≤ P × 3	$0.2 \sim \frac{D-P-2}{2}$	9			
	8		2.50 ~ 4.00				11			
	10		3.00 ~ 5.00				13			
	13		4.00 ~ 6.50				16			
	16		5.00 ~ 8.00				19			
	20		8.00 ~ 10.00				23			
	AGT2W APT2W AGT2T APT2T		25	25			10.00 ~ 12.50		(只有2T型 and B ≤ $\frac{L}{2} + 2$ )	28

訂貨：Catalog No. - L(LC) - P - B - R - (HC, TC...) 交期：20 天

AGT2P 13 - 25 - P5.80 - R1.4  
 AGT2W 13 - 25 - P5.80 - B8 - R1.4  
 AGT2W 13 - LC23 - P5.80 - B8 - R1.4 - HC15

追加加工

Alteration	Code	Spec.
肩部追加加工		變更肩型直徑 D ≤ HC < H 指定單位0.1mm
		變更肩型厚度 2 ≤ TC < 5 指定單位0.1mm (TKC、TKM併用時,指定單位可為0.01mm) ⊙全長縮短(5-TC) ⊙LC併用時,全長與LC相同
		變更肩型厚度公差 ⊗L < 16不適用 $T_{0}^{+0.3} \rightarrow T_{0}^{+0.02}$
		變更肩型厚度公差 ⊗L < 16不適用 $T_{0}^{+0.3} \rightarrow T_{-0.02}^{0}$

Alteration	Code	Spec.
全長追加加工		變更全長 13 ≤ LC < L 指定單位0.1mm (LKC併用時,指定單位可為0.01mm)
		變更全長公差 $L_{+0.2}^{+0.4} \rightarrow L_{0}^{+0.05}$
其它		變更P尺寸公差 $P_{0}^{+0.01} \rightarrow P_{0}^{+0.005}$
		變更D尺寸公差 $D_{m5} \rightarrow D_{0}^{+0.005}$
		變更R尺寸公差 $R_{\pm 0.1} \rightarrow R_{\pm 0.05}$