

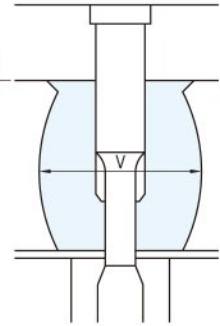
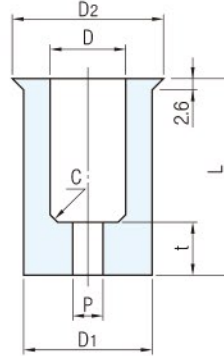
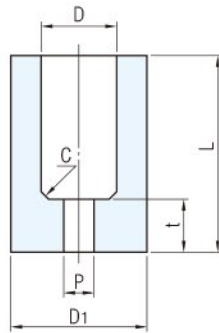
RoHS

OP(SRPS用優力膠脫料板)



※ D=6 · 8

※ D=10~32



硬度

蕭氏A95

※類型因D而異

D	D1	D2	P	t	C	Catalog No.		L											
						TYPE	D												
6	13	-	1.5	5	1.5	OP	(6)	27	32	37	42	47	52						
8	16	-	2.5				(8)	27	32	37	42	47	52						
10	-0.2 -0.4	18	21	3.5	6		10	27	29	32	34	37	39	42	44	47	49	52	54
13		23	26				13	27	29	32	34	37	39	42	44	47	49	52	54
16	28	31	4	7	2.0		16	37	39	42	44	47	49	52	54	57	59	62	64
20	33	36			20		48	50	53	55	58	60	63	65	68	70	73	75	
25	40	43	5	7	2.0		25	48	50	53	55	58	60	63	65	68	70	73	75
32	-0.3 -0.5	50			53		32	48	50	53	55	58	60	63	65	68	70	73	75

Wa. 注意

· D(6)(8)的類型不同,請參閱上圖

訂貨: Catalog No. - L 交期: 5 天

OP 13 - 52

Catalog No.	F=L×10%		F=L×15%		F=L×20%		V						
	TYPE	D-L	Fmm	N(kgf) 負載	Fmm	N(kgf) 負載		Fmm	N(kgf) 負載				
OP	6-27	2.7	637 { 65}	4.1	834 { 85}	5.4	981 {100}	15.0					
	6-32	3.2		4.8		6.4							
	6-37	3.7		5.6		7.4							
	6-42	4.2		6.3		8.4							
	6-47	4.7		7.1		9.4							
	6-52	5.2		7.8		10.4							
	8-27	2.7	981 {100}	4.1	1275 {130}	5.4	1569 {160}	18.5					
	8-32	3.2		4.8		6.4							
	8-37	3.7		5.6		7.4							
	8-42	4.2		6.3		8.4							
	8-47	4.7		7.1		9.4							
	8-52	5.2		7.8		10.4							
	OP	10-27	2.7	1226 {125}	4.1	1569 {160}	5.4	1863 {190}	20.7				
		10-29	2.9		4.4		5.8						
		10-32	3.2		4.8		6.4						
		10-34	3.4		5.1		6.8						
		10-37	3.7		5.6		7.4						
		10-39	3.9		5.9		7.8						
10-42		4.2	6.3		8.4								
10-44		4.4	6.6		8.8								
10-47		4.7	7.1		9.4								
10-49		4.9	7.4		9.8								
10-52		5.2	7.8		10.4								
10-54		5.4	8.1		10.8								
OP		13-27	2.7		1961 {200}		4.1			2452 {250}	5.4	2942 {300}	26.5
		13-29	2.9				4.4				5.8		
	13-32	3.2	4.8	6.4									
	13-34	3.4	5.1	6.8									
	13-37	3.7	5.6	7.4									
	13-39	3.9	5.9	7.8									
	13-42	4.2	6.3	8.4									
	13-44	4.4	6.6	8.8									
	13-47	4.7	7.1	9.4									
	13-49	4.9	7.4	9.8									
	13-52	5.2	7.8	10.4									
	13-54	5.4	8.1	10.8									
	OP	16-37	3.7	2746 {280}		5.6	3530 {360}	7.4	4217 {430}		32.0		
		16-39	3.9			5.9		7.8					
16-42		4.2	6.3		8.4								
16-44		4.4	6.6		8.8								
16-47		4.7	7.1		9.4								
16-49		4.9	7.4		9.8								
16-52		5.2	7.8		10.4								
16-54		5.4	8.1		10.8								
16-57		5.7	8.6		11.4								
16-59		5.9	8.9		11.8								
16-62	6.2	9.3	12.4										
16-64	6.4	9.6	12.8										

Catalog No.		F=L×10%		F=L×15%		F=L×20%		V			
TYPE	D-L	Fmm	N(kgf) 負載	Fmm	N(kgf) 負載	Fmm	N(kgf) 負載				
OP	20-48	4.8		7.2		9.6		38.0			
	20-50	5.0		7.5		10.0					
	20-53	5.3		8.0		10.6					
	20-55	5.5		8.3		11.0					
	20-58	5.8		8.7		11.6					
	20-60	6.0	3334 {340}	9.0	4217 {430}	12.0	5001 {510}				
	20-63	6.3		9.5		12.6					
	20-65	6.5		9.8		13.0					
	20-68	6.8		10.2		13.6					
	20-70	7.0		10.5		14.0					
	20-73	7.3		11.0		14.6					
	20-75	7.5		11.3		15.0					
	25-48	4.8				7.2				9.6	
	25-50	5.0				7.5				10.0	
	25-53	5.3				8.0				10.6	
	25-55	5.5		8.3		11.0					
	25-58	5.8		8.7		11.6					
	25-60	6.0	5099 {520}	9.0	6472 {660}	12.0	7453 {760}				
25-63	6.3	9.5		12.6							
25-65	6.5	9.8		13.0							
25-68	6.8	10.2		13.6							
25-70	7.0	10.5		14.0							
25-73	7.3	11.0		14.6							
25-75	7.5	11.3		15.0							

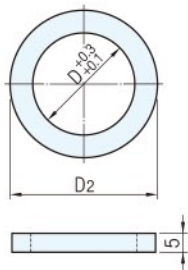
  

Catalog No.		F=L×10%		F=L×15%		F=L×20%		V
TYPE	D-L	Fmm	N(kgf) 負載	Fmm	N(kgf) 負載	Fmm	N(kgf) 負載	
OP	32-48	4.8		7.2		9.6		57.5
	32-50	5.0		7.5		10.0		
	32-53	5.3		8.0		10.6		
	32-55	5.5		8.3		11.0		
	32-58	5.8		8.7		11.6		
	32-60	6.0	7845 {800}	9.0	9807 {1000}	12.0	11278 {1150}	
	32-63	6.3		9.5		12.6		
	32-65	6.5		9.8		13.0		
	32-68	6.8		10.2		13.6		
	32-70	7.0		10.5		14.0		
	32-73	7.3		11.0		14.6		
	32-75	7.5	11.3	15.0				

**Ps. 備註**

· 負載(kgf)=負載N×0.101972

OPQ(優力膠脫料板保護環)



材質	硬度
S45C	20~25HRC

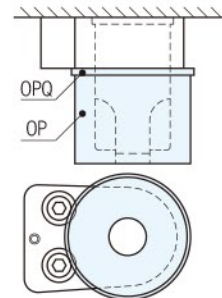
Catalog No.	D	D2
OPQ	10	22
	13	27
	16	32
	20	37
	25	44
	32	54

訂貨: Catalog No. 交期: 5 天

OPQ 13

**Ex. 使用例**

· 保護環OPQ可防止因單側接觸固定塊表面或與螺栓孔干擾而導致優力膠脫料板損壞



· 優力膠脫料板在模具調整時先進行空打,待形狀與沖頭刀口一致後再使用(異形沖頭也可以使用)

