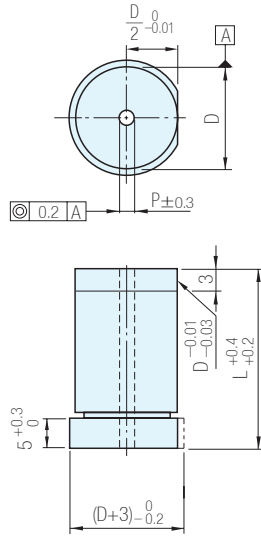


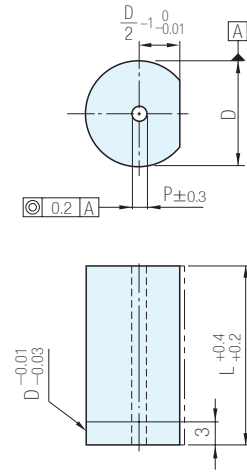


材質	硬度
相當於SKD11	60~63HRC

(D_{m5}) WGL-T



(D_{n5}) WPL-T



D	軸徑公差		Catalog No.		L						P	
	D _{m5}	D _{n5}	TYPE	D								
6	+0.009 +0.004	-	(D _{m5}) WGL-T	6	16	20	22	25	30	35	0.8	
8	+0.012 +0.006	+0.016 +0.010	(D _{m5}) WGL-T	8	16	20	22	25	30	35		
10				10	16	20	22	25	30	35		(40)
13	+0.015 +0.007	+0.020 +0.012		13	16	20	22	25	30	35		(40)
16			(D _{n5}) WPL-T	16	16	20	22	25	30	35		(40)
20	+0.017 +0.008	+0.024 +0.015		20	16	20	22	25	30	35		
25				25	16	20	22	25	30	35		

Ⓞ L(40)只有WGL-T型的規格

訂貨: Catalog No. - L 交期: 7 天
WPL-T 20 - 30

追加工

Alteration	Code	Spec.
	HC	變更肩型直徑 D ≤ HC < H 指定單位0.1mm
	TC	變更肩型厚度 2 ≤ TC < 5 指定單位0.1mm Ⓞ 全長縮短(5-TC) Ⓞ LC併用時,全長與LC相同
	WKC	止迴平行加工(雙面) Ⓞ L(LC) < 16不適用
	NKC	不進行止迴加工 Ⓞ D > 16不適用

Alteration	Code	Spec.
	LC	變更全長 10 ≤ LC < L 指定單位0.1mm Ⓞ 導入部縮短(L-LC)
		其它

訂貨: Catalog No. - L(LC) - (HC, TC, WKC...)
WPL-T 20 - 30 - TC3