

RoHS

①圓形用

①異形用

②

③

④

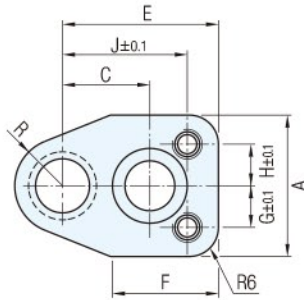
⑤



圓形沖頭用



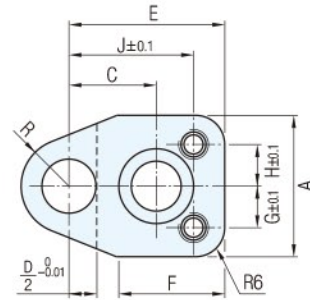
①



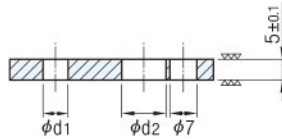
異形沖頭用



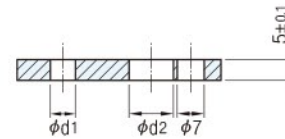
① ② ③ ④ ⑤



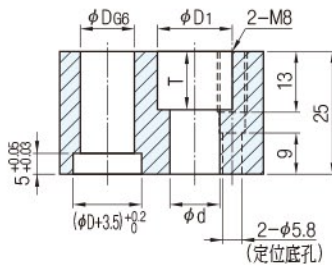
②



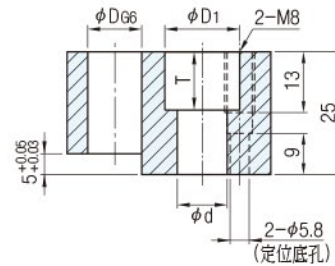
②



①



①



零件	材質	硬度	表面處理
①	S45C	-	Fe ₃ O ₄
②	相當於SCM440	56~60HRC	-
③	內六角螺栓	-	-

Catalog No.		構成零件				
圓形用	異形用	①	②	③	④	⑤
BS-WSP	BS-KSP	•	•	•	•	•
BSWQP	BSKQP	•		•	•	•
TSPB	TSPB		•			
BS-WPM	BS-KPM	•				

Catalog No.		D	D66	A	C	E	F	G	H	J	R	D1	d	T	d2	d1	圓形用附件 ③④⑤	異形用附件 ③④⑤
TYPE																		
圓形用 異形用 (①②③④⑤)	BS-WSP BS-KSP (①③④⑤)	10	+0.014 +0.005	34	22	38	26			31.5	11.5	19	13	13	14	6.2	③M12-35 ④NPBN6-30 ⑤NSW8	③M12-35 ④NPBN6-30 ⑤NSW8
BSWQP BSKQP (②)	TSPB TSPB (①)	13	+0.017 +0.006					12	12									
BS-WPM BS-KPM		16		36	26	45	33			39.0	14.0	25	17	17	18		③M16-35 ④NPBN6-30 ⑤NSW8	③M16-35 ④NPBN6-30 ⑤NSW8

訂貨： Catalog No. 交期： 6 天

BS-WSP 16