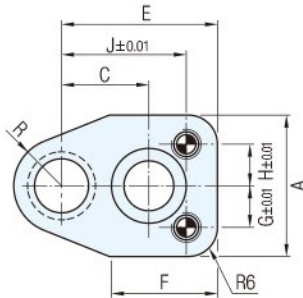
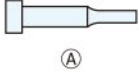


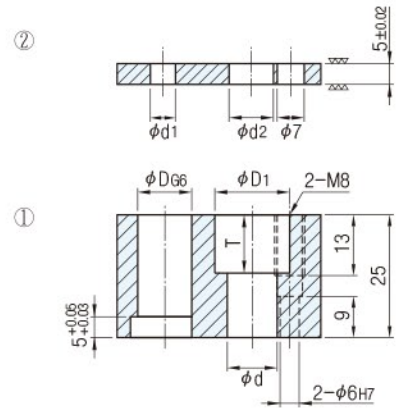
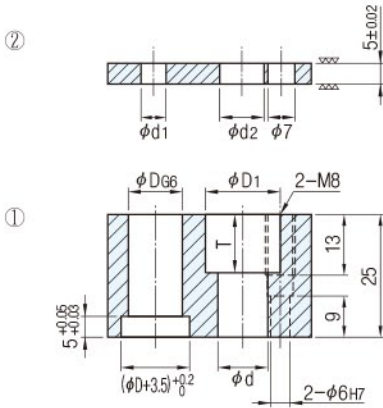
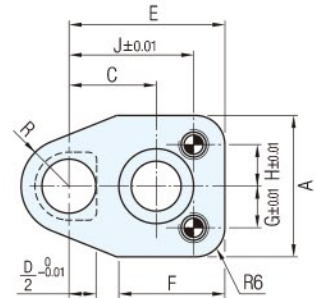
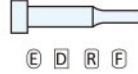
RoHS



圓形沖頭用



異形沖頭用



零件	材質	硬度	表面處理
①	S50C	-	Fe ₃ O ₄
②	S50C	56~60HRC	-
③	內六角螺柱		

Catalog No.		構成零件				
圓形用	異形用	①	②	③	④	⑤
ST-AR	ST-BR	•	•	•	•	•
STMR	STMS	•		•	•	•
SBLP	SBLP		•			
STA	STB	•				

Catalog No.		D	D66	A	C	E	F	G	H	J	R	D1	d	T	d2	d1	圓形用附件 ③④⑤	異形用附件 ③④⑤
TYPE																		
圓形用 ST-AR	異形用 ST-BR	10	+0.014 +0.005	34	22	38	26			31.5	11.5	19	13	13	14		③M12-35 ④NPBN6-30 ⑤NSW8	③M12-35 ④NPBN6-30 ⑤NSW8
STMR	STMS	13						12	12							6.2		
SBLP	SBLP	16	+0.017 +0.006	36	26	45	33			39.0	14.0	25	17	17	18		③M16-35 ④NPBN6-30 ⑤NSW8	③M16-35 ④NPBN6-30 ⑤NSW8
STA	STB																	

訂貨： Catalog No. 交期： 1 天

ST-AR 16