

RoHS

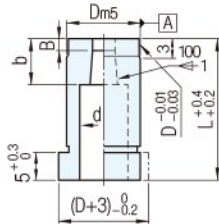
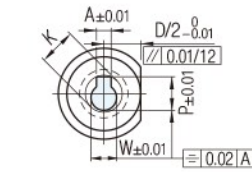


異形下模

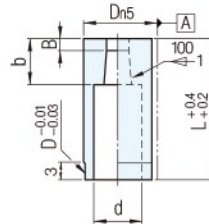
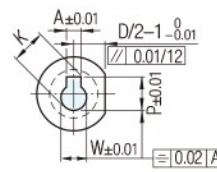
●規格圖記載的形狀為1個範例

材質 硬度	Catalog No Type
SKD11 60~63HRC	GL PL FL GLP PLP FLP

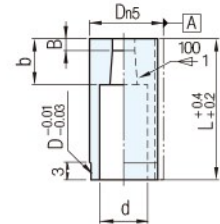
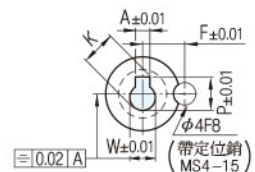
肩型 GL (L=16~35)
GLP (僅L=40)



直桿型 PL (L=16~35)
PLP (L=16~40)



定位銷止動型 FL (L=16~35)
FLP (L=16~40)



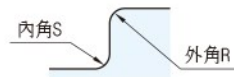
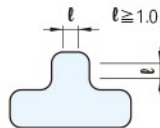
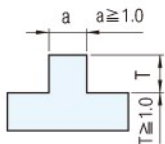
Catalog No			L	P.K max.	P.W min.	異形沖頭導套		異形下模		斜面逃料異形下模		d	F																				
Type	刃口形狀	D				GH·PH		GL·PL·FL		GLP·PLP·FLP																							
						B	b	B	b	B																							
異形下模	GL	6	(16)	3.00	2.00	-	-	-	-	-	-	3.4	-																				
	GL·PL	8		4.00										3	10	6	6	4.4															
		10		6.00										4					12	8	8	6.4	7.5										
		13		8.00										6										15	10	10	8.4	8					
	GL	16		10.00										8															2	20	14	12.6	10
	GLP	20		12.00																													
	PL	25	16.00	26.00	6.00	35.00	6.00	20.6	16																								
	PLP	32	20.00							40.00	7.00	45.00	8.00		26.6	19																	
	FL	38	26.00														36.00	6.00	41.00	25	36.0	22.5											
	FLP	45	35.00																				46.0	28	-	-	-	-					
		50	40.00											46.0															28	-	-	-	-
		56	45.00																														

Wa) 注意

●L=(16)·(40)時,適用的Type和D尺寸如右表所示

Type	L	D
GL	(16)	6
PL		7
PLP		38
FL		
FLP		
GLP	(40)	10
PLP		7
FLP		56

· 加工極限



沒有註明尺寸的角部帶有0.2以下的R

●指定單位

尺寸公差	指定單位
W±0.01	0.01
P±0.01	
A±0.01	
B±0.01	
C±0.01	
Q	
R	
S	
C(R部)	
A°(角度)	

訂貨: Catalog No - L - P·W·A·B·C·Q·R·S...指定0.01mm單位

GL 8J 25 - 25 - P14.00-W11.00-R4.00

交期: 7 天