



K-TD148

Horizontal and Vertical use

RoHS compliant

Product lineup



Product image



K-TD148A



K-TD148B

Features

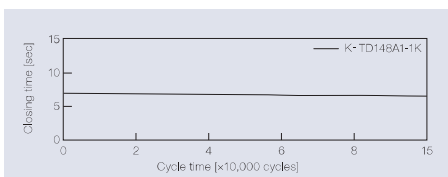
- The form of the K-TD148 is symmetrical, so it can be inserted in either direction
- The smallest partial rotation angle damper (Ø 11 mm)
- Equal in shape to and different in operation feeling from K-TD73
- Best-selling products

Product name	Torque [N·m] (lbf·in)	Damping direction	Shaft color
K-TD148A1-1K	0,10 (0,89)	CW	Natural
K-TD148A1-2K	0,20 (1,77)		
K-TD148A1-3K	0,30 (2,66)		

Product name	Torque [N·m] (lbf·in)	Damping direction	Shaft color
K-TD148B1-1K	0,10 (0,89)	CCW	Sky blue
K-TD148B1-2K	0,20 (1,77)		
K-TD148B1-3K	0,30 (2,66)		

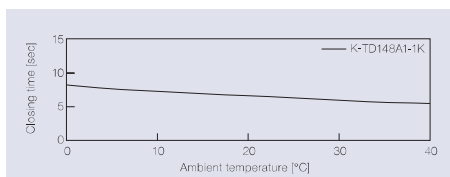
Product specifications

Durability



Torque	0,10 N·m (0,89 lbf·in)
Radial load	N/A
Angle range of closing time	70 to 0 deg.
Temperature	23 ± 2°C (73,4 ± 35,6°F)
Durability	150,000 cycles

Temperature characteristics



Measured according to the performance management testing method shown below after leaving in each designated ambient temperature for over one hour.

Performance management testing method

As the torque of partial rotation angle dampers is not consistent, the closing time measurement jig is used for the performance tests.

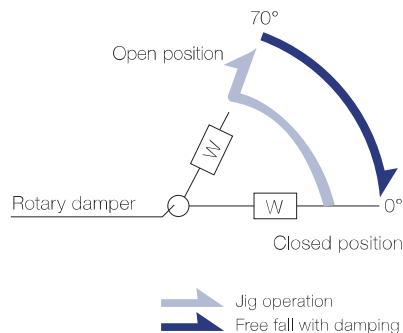
[Operation during measurement]

(Secures the housing of a rotary damper and moves its shaft)

All rotary dampers are managed by the following closing time test.

Test mode [70° (Pause) → (Free fall with damping) → 0°]

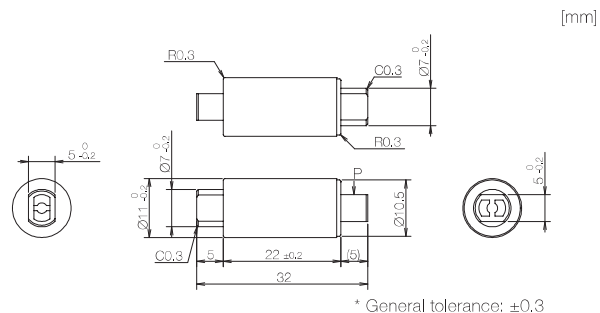
* Horizontal plane: 0°



Inspection specification before shipping

Type	Preset torque [N·m] (lbf·in)	Closing time
1K	0,10 (0,89)	2 to 15 sec
2K	0,20 (1,77)	
3K	0,30 (2,66)	

Product information



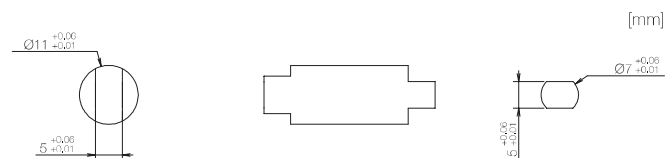
- Opening angle: 110°
- Product weight: Approx. 3 g
- Allowable radial load (P): 29,4 N

Main materials

Housing	Plastic (POM)
Cap	Plastic (POM)
Shaft	Plastic (POM)

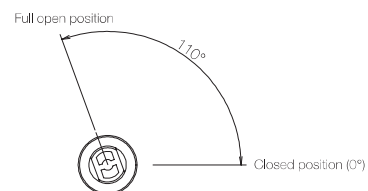
* General tolerance: ±0.3

Dimensions related to mounting

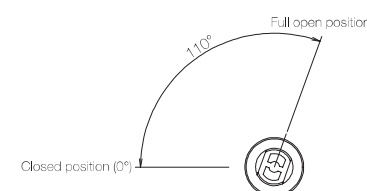


Opening angle

K-TD148A



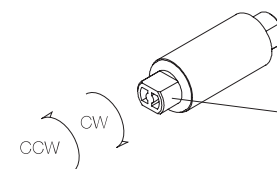
K-TD148B



* Shaft position at the time of shipping: Closed position

Damping directions

Rotation directions of the shaft to which torque is applied



* Housing secured / Shaft rotatable

Damping direction	Shaft color
CW	Natural
CCW	Sky blue