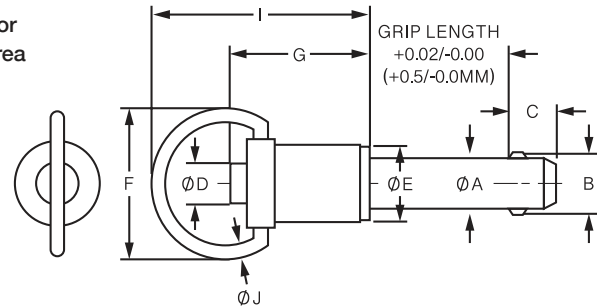


Kwik-Lok® Marine Pins Ring-Handle



- The Ring-Handle Kwik-Lok® Pin is designed for applications which require small clearance area around the pin.
- 303 Series Stainless steel handle and button for tough environment with stainless button.
- Pin body: Heat Treated 17-4 PH Stainless Steel.
- Ring allows for easy attachment of optional lanyard.
- 300 Series Stainless Steel Balls



Ring-Handle Marine Pin Specifications – Inch

DIA	A MIN	A MAX	B +/--.005	C +0.00 / -0.04	D MIN	D MAX	E MIN	E MAX	F MIN	G MIN	G MAX	I MAX	J MIN
3/16	0.1875	0.1885	0.220	0.260	0.250	0.310	0.310	0.530	1.060	0.730	1.490	1.450	0.080
1/4	0.2470	0.2485	0.289	0.290	0.250	0.310	0.310	0.530	1.060	0.780	1.490	1.500	0.080
5/16	0.3095	0.3110	0.375	0.330	0.250	0.310	0.410	0.590	1.060	0.830	1.490	1.650	0.080
3/8	0.3720	0.3735	0.440	0.365	0.300	0.390	0.450	0.650	1.060	0.940	1.490	1.650	0.080
1/2	0.4970	0.4985	0.594	0.460	0.435	0.565	0.600	0.800	1.160	1.140	1.580	1.850	0.080
5/8	0.6220	0.6235	0.750	0.580	0.450	0.580	0.750	0.905	1.240	1.400	1.840	2.250	0.120
3/4	0.7470	0.7485	0.887	0.670	0.570	0.700	0.865	1.045	1.640	1.625	1.990	2.650	0.120

Pin Dia	Grip Length (In)											
	0.5	0.75	1	1.25	1.5	1.75	2	2.5	3	4	5	
PART NUMBERS	3/16	880200	880201	880202	880203	880204	880205	880206	880208	880209	-	-
	1/4	880216	880217	880218	880219	880220	880221	880222	880224	880225	880227	-
	5/16	880232	880233	880234	880235	880236	880237	880238	880240	880241	880243	-
	3/8	880248	880249	880250	880251	880252	880253	880254	880256	880257	880259	880261
	1/2	880280	880281	880282	880283	880284	880285	880286	880288	880289	880291	880293
	5/8	880312	880313	880314	880315	880316	880317	880318	880320	880321	880323	880325
	3/4	880328	880329	880330	880331	880332	880333	880334	880336	880337	880339	880341

Contact customer service for other sizes.

May be ordered with 4 locking balls for additional locking element tensile strength.
Special Materials, grip length and longer “C” dimensions upon request.