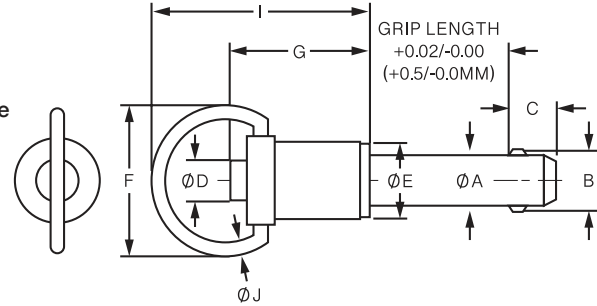


## Ring-Handle Kwik-Lok® Pin MS17987, NAS1333-NAS1343 C6=Stainless Ring Handle



- The Ring-Handle Kwik-Lok® Pin is designed for applications which require small clearance area around the pin.
- 303 Series Stainless steel handle for tough environment with 303 stainless button.
- Pin body: Heat Treated 17-4 PH Stainless Steel.
- Ring allows for easy attachment of optional lanyard.



### Ring-Handle Specifications – Inch

DIA	A MIN	A MAX	B +/- .005	C +0.00 / -0.04	D MIN	D MAX	E MIN	E MAX	F MIN	G MIN	G MAX	I MAX	J MIN
3/16	0.1875	0.1885	0.220	0.260	0.250	0.310	0.310	0.530	1.060	0.730	1.490	1.450	0.080
1/4	0.2470	0.2485	0.289	0.290	0.250	0.310	0.310	0.530	1.060	0.780	1.490	1.500	0.080
5/16	0.3095	0.3110	0.375	0.330	0.250	0.310	0.410	0.590	1.060	0.830	1.490	1.650	0.080
3/8	0.3720	0.3735	0.440	0.365	0.300	0.390	0.450	0.650	1.060	0.940	1.490	1.650	0.080
7/16	0.4345	0.4360	0.509	0.380	0.300	0.390	0.550	0.710	1.090	0.980	1.580	1.850	0.080
1/2	0.4970	0.4985	0.594	0.460	0.435	0.565	0.600	0.800	1.160	1.140	1.580	1.850	0.080
9/16	0.5595	0.5610	0.666	0.510	0.435	0.565	0.680	0.840	1.160	1.140	1.580	2.030	0.080
5/8	0.6220	0.6235	0.750	0.580	0.450	0.580	0.750	0.905	1.240	1.400	1.840	2.250	0.120
3/4	0.7470	0.7485	0.887	0.670	0.570	0.700	0.865	1.045	1.640	1.625	1.990	2.650	0.120
7/8	0.8720	0.8735	1.046	0.760	0.700	0.840	0.980	1.235	1.640	1.875	2.190	3.000	0.120
1	0.9970	0.9985	1.209	0.890	0.750	0.950	1.175	1.330	1.640	2.000	2.450	3.100	0.120

### Ring-Handle Specifications – Metric

DIA	A MIN	A MAX	B +/- .13	C +0.00 / -1.00	D MIN	D MAX	E MIN	E MAX	F MIN	G MIN	G MAX	I MAX	J MIN
5MM	4.92	4.96	5.54	6.0	6.4	7.9	7.9	13.5	26.9	18.5	37.8	36.8	2.0
6MM	5.92	5.96	6.99	7.0	6.4	7.9	7.9	13.5	26.9	18.5	37.8	36.8	2.0
8MM	7.92	7.96	9.42	8.0	6.4	7.9	7.9	13.5	26.9	18.5	37.8	36.8	2.0
10MM	9.92	9.96	11.86	9.0	7.6	9.9	11.4	16.5	26.9	23.9	37.8	36.8	2.0
12MM	11.92	11.96	14.45	10.0	7.6	9.9	14.0	18.0	27.7	24.9	40.1	47.0	2.0
16MM	15.92	15.96	19.00	14.0	11.4	14.7	19.1	23.0	31.5	35.6	46.7	57.2	3.0
20MM	19.92	19.96	24.08	17.0	14.5	17.8	22.0	26.5	41.7	41.3	50.5	67.3	3.0
25MM	24.92	24.96	30.94	22.0	19.1	24.1	29.8	33.8	41.7	50.8	62.2	78.7	3.0

Dimensions in millimeters

May be ordered with 4 locking balls for additional locking element tensile strength.  
Special Materials, grip length and longer “C” dimensions upon request.



**Ring-Handle – Inch**

**Stainless Steel – High Strength Stainless Steel, 17-4 PH Heat Treated**

Pin Dia	Grip Length (In)												
	0.5	0.75	1	1.25	1.5	1.75	2	2.5	3	4	5	6	
PART NUMBERS	3/16	800200	800201	800202	800203	800204	800205	800206	800208	800209	800211	800213	800215
	1/4	800216	800217	800218	800219	800220	800221	800222	800224	800225	800227	800229	800231
	5/16	800232	800233	800234	800235	800236	800237	800238	800240	800241	800243	800245	800247
	3/8	800248	800249	800250	800251	800252	800253	800254	800256	800257	800259	800261	800263
	7/16	800264	800265	800266	800267	800268	800269	800270	800272	800273	800275	800277	800279
	1/2	800280	800281	800282	800283	800284	800285	800286	800288	800289	800291	800293	800295
	9/16	800296	800297	800298	800299	800300	800301	800302	800304	800305	800307	800309	800311
	5/8	800312	800313	800314	800315	800316	800317	800318	800320	800321	800323	800325	800327
	3/4	800328	800329	800330	800331	800332	800333	800334	800336	800337	800339	800341	800343
	7/8	800344	800345	800346	800347	800348	800349	800350	800352	800353	800355	800357	800059
1	800360	800361	800362	800363	800364	800365	800366	800368	800369	800371	800373	800375	

**Ring-Handle – Metric**

**Stainless Steel – High Strength Stainless Steel, 17-4 PH Heat Treated**

Pin Dia	Grip Length (Metric)												
	10	15	20	25	30	40	50	60	70	80	90	100	
PART NUMBERS	5	850200	850201	850202	850203	850204	850205	850206	850207	850208	850209	850210	850211
	6	850212	850213	850214	850215	850216	850217	850218	850219	850220	850221	850222	850223
	8	850224	850225	850226	850227	850228	850229	850230	850231	850232	850233	850234	850235
	10	850236	850237	850238	850239	850240	850241	850242	850243	850244	850245	850246	850247
	12	850248	850249	850250	850251	850252	850253	850254	850255	850256	850257	850258	850259
	16	850260	850261	850262	850263	850264	850265	850266	850267	850268	850269	850270	850271
	20	850272	850273	850274	850275	850276	850277	850278	850279	850280	850281	850282	850283
	25	850284	850285	850286	850287	850288	850289	850290	850291	850292	850293	850294	850295

Contact customer service for other sizes.

May be ordered with 4 locking balls for additional locking element tensile strength.