

Button Handle Kwik-Lok® Pin MS17984, NAS 1333-1343



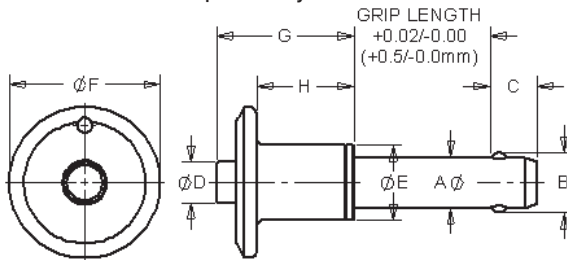
A3=Aluminum Button Handle

- The Button Handle Kwik-Lok® Pin is ideal for applications that have limited space around the handle.
- Light weight 2024 Aluminum Alloy handle with 2024 blue anodized aluminum button.
- Pin body Heat Treated 17-4 PH Stainless Steel.
- Includes hole and split ring for easy attachment of optional lanyard.



C3=Stainless Button Handle

- Heavy Duty solid handle in 303 series stainless steel provides additional impact resistance
- Includes hole and split ring for easy attachment of optional lanyard.
- All stainless steel construction provides additional corrosion resistance
- Body is made from high Strength Stainless Steel, 17-4 PH heat treated
- Meets or exceeds NASM 23460 specifications
- May be ordered with 4 locking balls for additional locking element tensile strength



Button Handle Specifications – Inch

DIA	A MIN	A MAX	B +/--.005	C +0.00 / -0.04	D MIN	D MAX	E MIN	E MAX	F MIN	F MAX	G MAX	H MIN
3/16	0.1875	0.1885	0.220	0.260	0.250	0.310	0.310	0.440	0.720	0.800	0.830	0.480
1/4	0.2470	0.2485	0.289	0.290	0.250	0.310	0.310	0.440	0.720	0.800	0.890	0.480
5/16	0.3095	0.3110	0.375	0.330	0.250	0.310	0.410	0.490	0.810	1.135	0.930	0.480
3/8	0.3720	0.3735	0.440	0.365	0.300	0.390	0.450	0.570	0.875	1.135	1.040	0.620
7/16	0.4345	0.4360	0.509	0.380	0.300	0.390	0.550	0.625	0.940	1.400	1.160	0.620
1/2	0.4970	0.4985	0.594	0.460	0.435	0.565	0.600	0.725	1.300	1.400	1.190	0.720
9/16	0.5595	0.5610	0.666	0.510	0.435	0.565	0.680	0.760	1.400	1.650	1.410	0.950
5/8	0.6220	0.6235	0.750	0.580	0.450	0.580	0.750	0.865	1.530	1.700	1.500	0.950
3/4	0.7470	0.7485	0.887	0.670	0.570	0.700	0.865	1.000	1.790	1.900	1.680	1.140
7/8	0.8720	0.8735	1.046	0.760	0.700	0.840	0.865	1.000	2.120	2.250	1.985	1.270
1	0.9970	0.9985	1.209	0.890	0.750	0.950	1.175	1.250	2.120	2.250	2.140	1.490

Button Handle Specifications – Metric

DIA	A MIN	A MAX	B +/--.13	C +0.00 / -1.00	D MIN	D MAX	E MIN	E MAX	F MIN	F MAX	G MAX	H MIN
5MM	4.92	4.96	5.54	6.0	6.4	7.9	7.9	11.2	18.3	20.3	21.1	12.2
6MM	5.92	5.96	6.99	7.0	6.4	7.9	7.9	11.2	18.3	20.3	22.6	12.2
8MM	7.92	7.96	9.42	8.0	6.4	7.9	10.4	12.4	20.6	28.8	23.6	12.2
10MM	9.92	9.96	11.86	9.0	7.6	9.9	11.4	14.5	22.2	28.8	26.4	15.7
12MM	11.92	11.96	14.45	10.0	7.6	9.9	14.0	15.9	23.9	35.6	29.5	15.7
16MM	15.92	15.96	19.00	14.0	11.4	14.7	19.1	22.0	38.9	43.2	38.1	24.1
20MM	19.92	19.96	24.08	17.0	14.5	17.8	22.0	25.4	45.5	48.3	42.7	29.0
25MM	24.92	24.96	30.94	22.0	19.1	24.1	29.8	31.8	53.8	57.2	54.4	37.8

Dimensions in millimeters

May be ordered with 4 locking balls for additional locking element tensile strength.
Special Materials, grip length and longer “C” dimensions upon request.



Button Handle – Inch

Aluminum Button, Heat Treated Stainless Steel 17-4 PH Body

Pin Dia	Grip Length (In)												
	0.5	0.75	1	1.25	1.5	1.75	2	2.5	3	4	5	6	
PART NUMBERS	3/16	800600	800601	800602	800603	800604	800605	800606	800608	800609	800611	800613	800615
	1/4	800616	800617	800618	800619	800620	800621	800622	800624	800625	800627	800629	800631
	5/16	800632	800633	800634	800635	800636	800637	800638	800640	800641	800643	800645	800647
	3/8	800648	800649	800650	800651	800652	800653	800654	800656	800657	800659	800661	800663
	7/16	800664	800665	800666	800667	800668	800669	800670	800672	800673	800675	800677	800679
	1/2	800680	800681	800682	800683	800684	800685	800686	800688	800689	800691	800693	800695
	9/16	800696	800697	800698	800699	800700	800701	800702	800704	800705	800707	800709	800711
	5/8	800712	800713	800714	800715	800716	800717	800718	800720	800721	800723	800725	800727
	3/4	800728	800729	800730	800731	800732	800733	800734	800736	800737	800739	800741	800743
	7/8	800744	800745	800746	800747	800748	800749	800750	800752	800753	800755	800757	800759
	1	800760	800761	800762	800763	800764	800765	800766	800768	800769	800771	800773	800775

Stainless Steel Button, Heat Treated Stainless Steel 17-4 PH Body

Pin Dia	Grip Length (In)												
	0.5	0.75	1	1.25	1.5	1.75	2	2.5	3	4	5	6	
PART NUMBERS	3/16	806400	806401	806402	806403	806404	806405	806406	806408	806409	806411	806413	806415
	1/4	806416	806417	806418	806419	806420	806421	806422	806424	806425	806427	806429	806431
	5/16	806432	806433	806434	806435	806436	806437	806438	806440	806441	806443	806445	806447
	3/8	806448	806449	806450	806451	806452	806453	806454	806456	806457	806459	806461	806463
	7/16	806464	806465	806466	806467	806468	806469	806470	806472	806473	806475	806477	806479
	1/2	806480	806481	806482	806483	806484	806485	806486	806488	806489	806491	806493	806495
	9/16	806496	806497	806498	806499	806500	806501	806502	806504	806505	806507	806509	806511
	5/8	806512	806513	806514	806515	806516	806517	806518	806520	806521	806523	806525	806527
	3/4	806528	806529	806530	806531	806532	806533	806534	806536	806537	806539	806541	806543
	7/8	806544	806545	806546	806547	806548	806549	806550	806552	806553	806555	806557	806559
	1	806560	806561	806562	806563	806564	806565	806566	806568	806569	806571	806573	806575

Button Handle – Metric

Aluminum Button, Heat Treated Stainless Steel 17-4 PH Body

Pin Dia	Grip Length (Metric)												
	10	15	20	25	30	40	50	60	70	80	90	100	
PART NUMBERS	5	850600	850601	850602	850603	850604	850605	850606	850607	850608	850609	850610	850611
	6	850612	850613	850614	850615	850616	850617	850618	850619	850620	850621	850622	850623
	8	850624	850625	850626	850627	850628	850629	850630	850631	850632	850633	850634	850635
	10	850636	850637	850638	850639	850640	850641	850642	850643	850644	850645	850646	850647
	12	850648	850649	850650	850651	850652	850653	850654	850655	850656	850657	850658	850659
	16	850660	850661	850662	850663	850664	850665	850666	850667	850668	850669	850670	850671
	20	850672	850673	850674	850675	850676	850677	850678	850679	850680	850681	850682	850683
	25	850684	850685	850686	850687	850688	850689	850690	850691	850692	850693	850694	850695

Stainless Steel Button, Heat Treated Stainless Steel 17-4 PH Body

Pin Dia	Grip Length (Metric)												
	10	15	20	25	30	40	50	60	70	80	90	100	
PART NUMBERS	5	855400	855401	855402	855403	855404	855405	855406	855407	855408	855409	855410	855411
	6	855412	855413	855414	855415	855416	855417	855418	855419	855420	855421	855422	855423
	8	855424	855425	855426	855427	855428	855429	855430	855431	855432	855433	855434	855435
	10	855436	855437	855438	855439	855440	855441	855442	855443	855444	855445	855446	855447
	12	855448	855449	855450	855451	855452	855453	855454	855455	855456	855457	855458	855459
	16	855460	855461	855462	855463	855464	855465	855466	855467	855468	855469	855470	855471
	20	855472	855473	855474	855475	855476	855477	855478	855479	855480	855481	855482	855483
	25	855484	855485	855486	855487	855488	855489	855490	855491	855492	855493	855494	855495

Contact customer service for other sizes.

May be ordered with 4 locking balls for additional locking element tensile strength.