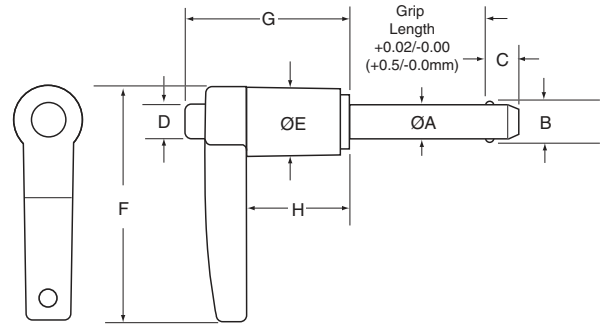


L-Handle Kwik-Lok® Pin MS17986, NAS1333-NAS1343 A5=Aluminum L Handle



- The L-Handle Kwik-Lok® Pin provides a firm grip for applications where a T-Handle will not fit.
- Handle is Anodized black cast aluminum and the button is 2024 blue anodized aluminum.
- Pin body Heat Treated 17-4 PH Stainless Steel.
- Includes hole and split ring for easy attachment of optional lanyard.



L-Handle Specifications – Inch

DIA	A MIN	A MAX	B +/- .005	C +0.00 / -0.04	D MIN	D MAX	E MIN	E MAX	F MIN	F MAX	G MAX	H MIN
3/16	0.1875	0.1885	0.220	0.260	0.250	0.310	0.380	0.500	1.720	1.800	1.270	0.760
1/4	0.2470	0.2485	0.289	0.290	0.250	0.310	0.380	0.500	1.720	1.800	1.270	0.760
5/16	0.3095	0.3110	0.375	0.330	0.250	0.310	0.380	0.500	1.720	1.800	1.270	0.760
3/8	0.3720	0.3735	0.440	0.365	0.300	0.390	0.510	0.625	1.945	2.030	1.450	0.850
7/16	0.4345	0.4360	0.509	0.380	0.300	0.390	0.510	0.625	1.945	2.030	1.450	0.850
1/2	0.4970	0.4985	0.594	0.460	0.435	0.565	0.630	0.800	2.230	2.360	1.600	0.850
9/16	0.5595	0.5610	0.666	0.510	0.435	0.565	0.630	0.800	2.230	2.360	1.600	0.850
5/8	0.6220	0.6235	0.750	0.580	0.450	0.580	0.810	0.975	2.385	3.070	1.700	0.905
3/4	0.7470	0.7485	0.887	0.670	0.570	0.700	0.810	1.000	2.465	3.070	1.720	0.980
7/8	0.8720	0.8735	1.046	0.760	0.700	0.840	1.120	1.320	2.750	3.700	2.170	1.200
1	0.9970	0.9985	1.209	0.890	0.750	0.950	1.180	1.320	2.750	3.700	2.170	1.200

L-Handle Specifications – Metric

DIA	A MIN	A MAX	B +/- .13	C +0.00 / -1.00	D MIN	D MAX	E MIN	E MAX	F MIN	F MAX	G MAX	H MIN
5MM	4.92	4.96	5.54	6.0	6.4	7.9	7.9	12.7	43.7	45.7	32.3	19.3
6MM	5.92	5.96	6.99	7.0	6.4	7.9	7.9	12.7	43.7	45.7	32.3	19.3
8MM	7.92	7.96	9.42	8.0	6.4	7.9	7.9	12.7	43.7	45.7	32.3	19.3
10MM	9.92	9.96	11.86	9.0	7.6	9.9	13.0	15.9	49.4	51.6	36.8	21.6
12MM	11.92	11.96	14.45	10.0	7.6	9.9	13.0	15.9	49.4	51.6	36.8	21.6
16MM	15.92	15.96	19.00	14.0	11.4	14.7	20.6	24.8	60.6	78.0	43.2	23.0
20MM	19.92	19.96	24.08	17.0	14.5	17.8	20.6	25.4	62.6	78.0	43.7	24.9
25MM	24.92	24.96	30.94	22.0	19.1	24.1	30.0	33.5	69.9	94.0	55.1	30.5

Dimensions in millimeters

May be ordered with 4 locking balls for additional locking element tensile strength.
Special Materials, grip length and longer “C” dimensions upon request.



L-Handle – Inch

Aluminum Handle, Body – High Strength Stainless Steel, 17-4 PH Heat Treated

Pin Dia	Grip Length (In)												
	0.5	0.75	1	1.25	1.5	1.75	2	2.5	3	4	5	6	
PART NUMBERS	3/16	801400	801401	801402	801403	801404	801405	801406	801408	801409	801411	801413	801415
	1/4	801416	801417	801418	801419	801420	801421	801422	801424	801425	801427	801429	801431
	5/16	801432	801433	801434	801435	801436	801437	801438	801440	801441	801443	801445	801447
	3/8	801448	801449	801450	801451	801452	801453	801454	801456	801457	801459	801461	801463
	7/16	801464	801465	801466	801467	801468	801469	801470	801472	801473	801475	801477	801479
	1/2	801480	801481	801482	801483	801484	801485	801486	801488	801489	801491	801493	801495
	9/16	801496	801497	801498	801499	801500	801501	801502	801504	801505	801507	801509	801511
	5/8	801512	801513	801514	801515	801516	801517	801518	801520	801521	801523	801525	801527
	3/4	801528	801529	801530	801531	801532	801533	801534	801536	801537	801539	801541	801543
	7/8	801544	801545	801546	801547	801548	801549	801550	801552	801553	801555	801557	801559
1	801560	801561	801562	801563	801564	801565	801566	801568	801569	801571	801573	801575	

L-Handle – Metric

Aluminum Handle, Body – High Strength Stainless Steel, 17-4 PH Heat Treated

Pin Dia	Grip Length (Metric)												
	10	15	20	25	30	40	50	60	70	80	90	100	
PART NUMBERS	5	851400	851401	851402	851403	851404	851405	851406	851407	851408	851409	851410	851411
	6	851412	851413	851414	851415	851416	851417	851418	851419	851420	851421	851422	851423
	8	851424	851425	851426	851427	851428	851429	851430	851431	851432	851433	851434	851435
	10	851436	851437	851438	851439	851440	851441	851442	851443	851444	851445	851446	851447
	12	851448	851449	851450	851451	851452	851453	851454	851455	851456	851457	851458	851459
	16	851460	851461	851462	851463	851464	851465	851466	851467	851468	851469	851470	851471
	20	851472	851473	851474	851475	851476	851477	851478	851479	851480	851481	851482	851483
	25	851484	851485	851486	851487	851488	851489	851490	851491	851492	851493	851494	851495

Contact customer service for other sizes.



May be ordered with 4 locking balls for additional locking element tensile strength.