

- 1
- 2
- 3
- 4
- 5
- 6
- 7
- 8
- 9
- 10
- 11
- 12
- 13
- 14
- 15
- 16
- 17
- 18

MATERIAL

Polyamide based (PA) technopolymer body, polyurethane (PUR) connector, thermoplastic polyurethane cable (TPU) and nickel-plated brass nut.

FEATURES

Proximity switches can be fitted to pneumatic fastening clamps MM-BL (see page -), MM-BI (see page -) or MM-BC (see page -) to induce controlled signals that have as their output the lighting of 3 LEDs providing the arm position.

Proximity switches can be screwed directly onto the clamps and can be assembled on both sides.

TECHNICAL DATA

LED indicators:

- Green: the sensor is correctly connected and ready to transmit the signal.
- Red: the arm is in the locked position.
- Yellow: the arm is in the rest position.

Output	PNP
Power supply	10 – 30 Vdc
Max load	100 mA
Voltage drop	≤ 2 V
Temperature	0 ÷ 50 °C
Protection class	IP65

SPECIAL EXECUTION ON REQUEST

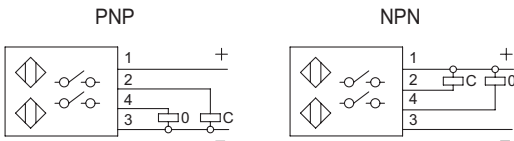
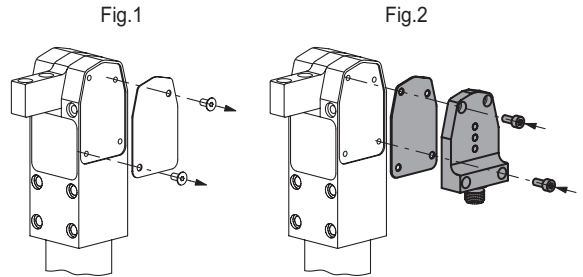
Proximity switch with NPN output

ACCESSORIES ON REQUEST

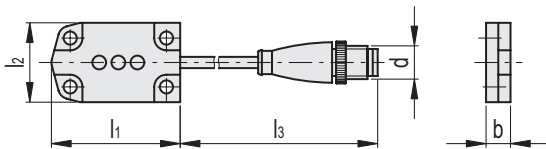
Cable with M12 connector MM-CS (see page -).

ASSEMBLY INSTRUCTIONS

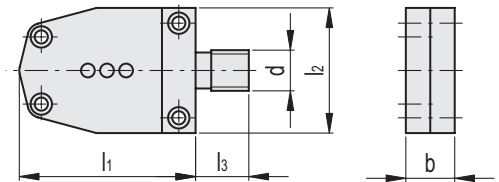
1. Remove the screws and the metal plate from the fastening clamps Fig.1
2. Assemble the thermosetting plastic plate, the proximity sensor and the two M4 screws in black-oxide steel (included in the supply) Fig.2.



MM-SI-20



MM-SI-32
MM-SI-40
MM-SI-50



Code	Description	b	d	l1 -0.2	l2	l3	For	⚖
MM.28020	MM-SI-20	8	M12 x 1	42	26	110	MM-BL-20 / MM-BI-20 / MM-BC-20	20
MM.28032	MM-SI-32	16	M12 x 1	57.5	41	10	MM-BL-32 / MM-BI-32 / MM-BC-32	26
MM.28040	MM-SI-40	16	M12 x 1	73	48	10	MM-BL-40 / MM-BI-40 / MM-BC-40	31
MM.28050	MM-SI-50	16	M12 x 1	73	48	10	MM-BL-50 / MM-BI-50	31