

MULTI-ROLLER LINEAR SLIDE MLGX25 For Medium Load

Passed a run test of 100 km



- The unique structure called "Dual X" allows for smooth movement even when the load is applied horizontally or vertically.
- The rail is for medium load, designed to withstand an operating load of up to 120 N in either a horizontal or vertical direction.
- Tested at 200 mm/s for 500,000 round trips of 100 mm (total distance 100 km).
- Since there is no ball creep, it can be used together with a motor drive.
- Moves smoothly even when moment load occurs.
- The guide block is a preloaded type with minimal backlash.

[Application]

- Automatic machine, medical equipment, analytical instrument, machine tool.

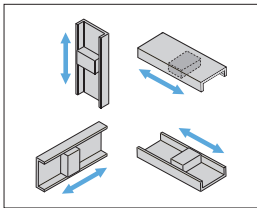
[Remarks]

- Please use with stoppers.

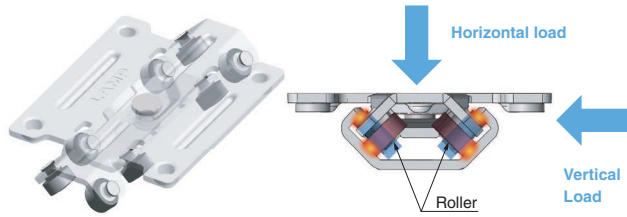
Multiple guide blocks can be used in a guide rail.

[Mounting Direction]

Can be mounted in the following directions

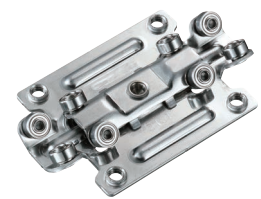


[Dual X Structure]



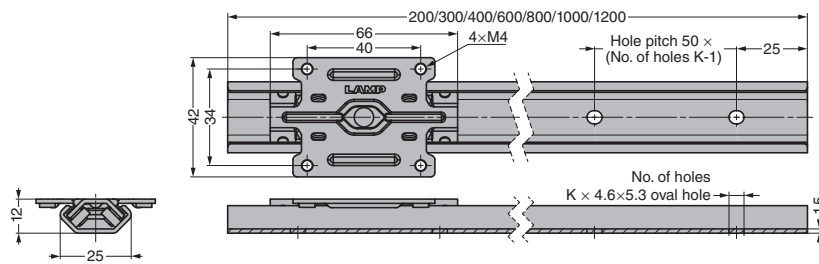
Rollers are located at two different angles to resist both horizontal and vertical loads.

[No Ball Creep]



Ball creep² does not occur on roller slides, unlike ball bearing slides.

²A phenomenon where travel distances vary between outward and return paths due to a misaligned ball contact point that may occur depending on the smoothness of sliding or applied force when a ball type rail is moved. If extra load is applied in this state, the rail may become unable to move.



* The figure shows the dimensions when the guide rail and a guide block are combined.

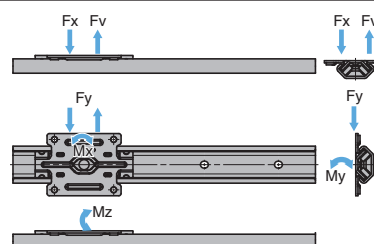
Video Link



[Rated Load Reference Values]

Loading Direction	Horizontal Load Fx		Vertical Load Fy		Horizontal Load Fv	
	N	kgf	N	kgf	N	kgf
Max. Load Capacity	200	20.4	200	20.4	130	13.2
Operating Load	120	12.2	120	12.2	80	8.1

Loading Direction	Moment Mx		Moment My		Moment Mz	
	N-m	kgf-cm	N-m	kgf-cm	N-m	kgf-cm
Max. Moment	4.0	40.8	2.0	20.4	4.0	40.8
Operating Moment	2.4	24.4	1.2	12.2	2.4	24.4



MULTI-ROLLER LINEAR GUIDE RAIL **MLGX25** For Medium Load

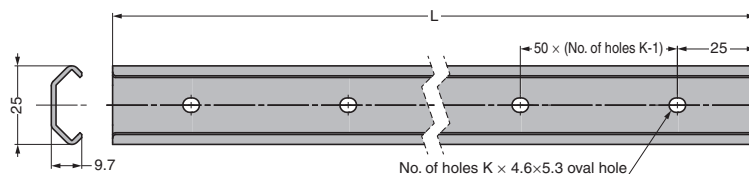


[Other]

● Grease is applied to the rail. When applying additional grease, use lithium soap grease.

[Recommended Screw]

● Hexagon socket bolt M4 (head diameter: $\phi 7.6$ mm or less, head height: 2.2 mm or less)

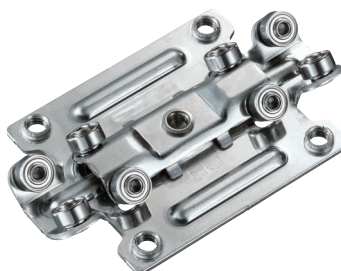


RoHS	CAD	Item Code	Item Name	Length (L)	No. of Holes K	Material	Weight (g)	Box (pcs)
●	2D/3D	190-047-257	MLGX25-200S	200	4	Stainless Steel (SUS304)	86	1,850
●	2D/3D	190-047-258	MLGX25-300S	300	6		130	2,270
●	2D/3D	190-047-259	MLGX25-400S	400	8		173	2,680
●	2D/3D	190-047-260	MLGX25-600S	600	12		258	3,350
●	2D/3D	190-047-261	MLGX25-800S	800	16		344	4,450
●	2D/3D	190-047-262	MLGX25-1000S	1000	20		430	5,560
●	2D/3D	190-047-263	MLGX25-1200S	1200	24		516	6,700

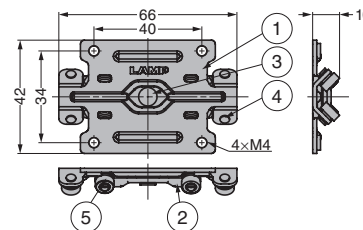
MULTI-ROLLER LINEAR GUIDE BLOCK **MLGX-25C-8** For Medium Load



Front



Back



No.	Part Name	Material
①	Mounting Plate	Stainless Steel (SUS430)
②	Holding Plate	
③	Caulking Pin	Stainless Steel (SUS303)
④	Roller Pin	Stainless Steel (SUS XM7)
⑤	Bearing Roller	Steel

● Preloaded type with minimal backlash.

RoHS	CAD	Item Code	Item Name	Weight (g)	Box (pcs)
●	2D/3D	190-047-256	MLGX-25C-8	39	3,070

[Operating Load/Moment and Travel Distance (Life) Guidelines] Condition: 200 mm/sec of speed

