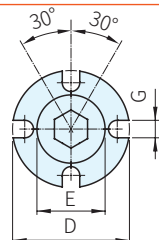
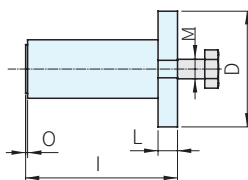
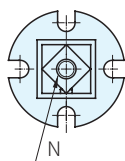
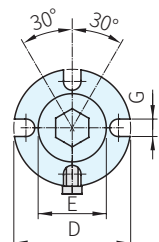
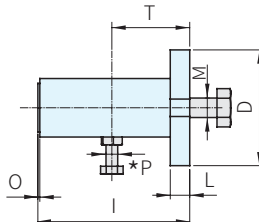
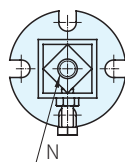


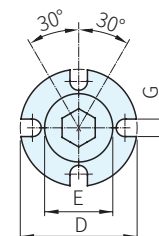
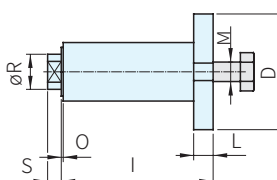
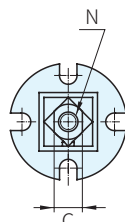
TC-CEA



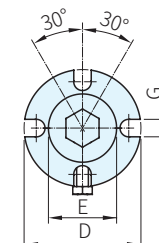
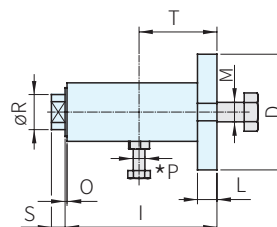
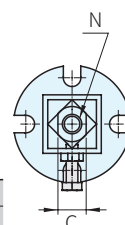
TC-CEAP



TC-CEB



TC-CEBP



Type	本體			入子 材質	彈性體 材質
	材質	處理	顏色		
TC-CEA/TC-CEAP TC-CEB/TC-CEBP	FCD400	塗裝	灰	鋁合金 (A6060)	橡膠

標準型 品號	預負荷型 品號	D	E	G	I	L	M	N	O	*P	T	Nm(0°~30°) Q(扭矩)		質量 (kg)	庫存
TC-CEA10	TC-CEAP10	40	20	7	51	6	M6	M6	1	M4	25	0~6.8	0.19	·	
TC-CEA20	TC-CEAP20	50	30	9	63	8	M8	M8		M6	35	0~13.6	0.34	·	
TC-CEA30	TC-CEAP30	60	35		78	10	M10	M10		M8	40	0~34.0	0.52	·	
TC-CEA40	TC-CEAP40	80	48	11	107	15	M12	M12		M8	60	0~103.0	1.50	·	
TC-CEA50	TC-CEAP50	100	62	13	138		M16	M16		M8	80	0~280.0	3.10	·	
TC-CEA60	TC-CEAP60	120	80	199	18	M20	M20	2		M10	115	0~574.0	4.90	·	
TC-CEA70	TC-CEAP70	130	78	17	209	20	M24			M24	M12	115	0~987.5	6.00	△

標準型 品號	預負荷型 品號	C	D	E	G	I	L	M	N	O	*P	R	S	T	Nm(0°~30°) Q(扭矩)		質量 (kg)	庫存
TC-CEB10	TC-CEBP10	9.5	40	20	7	50	6	M6	M6	1	M4	11	5	25	0~6.8	0.19	△	
TC-CEB20	TC-CEBP20	12	50	30	9	62	8	M8	M8		M6	15	35	35	0~13.6	0.34	△	
TC-CEB30	TC-CEBP30	14.5	60	35		77	10	M10	M10		M6	18	7	40	40	0~34.0	0.52	△
TC-CEB40	TC-CEBP40	20	80	48	11	106	15	M12	M12		M8	27	9	60	60	0~103.0	1.50	△
TC-CEB50	TC-CEBP50	26	100	62	13	137		M16	M16		M8	38	11	80	80	0~280.0	3.10	△
TC-CEB60	TC-CEBP60	34	120	80	199	18	M20	M20	2		M10	45	14	115	0~574.0	4.90	△	
TC-CEB70	TC-CEBP70	40	130	78	17	209	20	M24			M24	M12	50	19	115	0~987.5	6.00	△

PS. 備註

- TC-CEA和TC-CEAP及TC-CEB和TC-CEBP是基本彈性支撐，與產品目錄中顯示的可互換附件一併使用，或依據需要與其它設計的特別部件組合
- 為了便利安裝TC-CEAP和TC-CEBP有預加負荷系統(*)
- 扭轉角度±30° · 工作溫度從-40°C到+80°C

訂貨： 交期： 天 ·
TC-CEA10 天 △