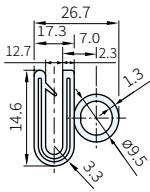


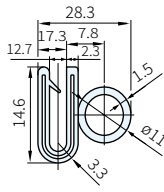


本體	金屬芯	橡膠部
PVC	鋁(A3004)	EPDM

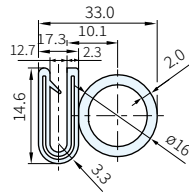
YY3375A



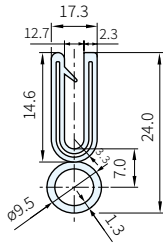
YY4375A



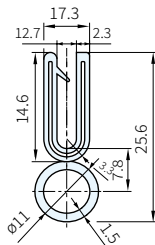
YY6375A



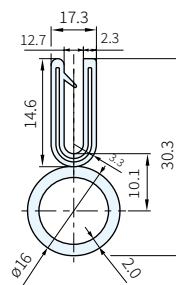
YY3375C



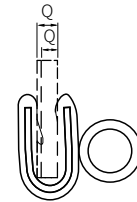
YY4375C



YY6375C



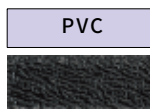
安裝板厚範圍



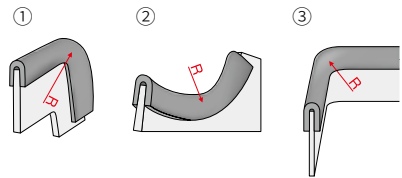
顏色



表面紋路



■ 彎曲方向



Type	T	材質	顏色	L尺寸 (m)	Q 安裝板厚範圍	最小彎曲半徑mm			庫存
						彎曲方向①	彎曲方向②	彎曲方向③	
YY3375A	12.7	PVC	B	1~15(單位1公尺) 75(單位/捲)	12.0~12.7	40	30	50	△
YY3375C						40	30	50	△
YY4375A	12.7	PVC	B		12.0~12.7	40	30	50	△
YY4375C						40	30	50	△
YY6375A	12.7	PVC	B		12.0~12.7	60	60	50	△
YY6375C						60	60	50	△

備註

- L尺寸的指定單位是1公尺
- 最小彎曲半徑的數值是實驗值，僅提供參考使用
- 請參考本單元末之產品應用

訂貨： [Type] - [T] [材質] [顏色] - [L] 交期： 18 天

YY3375A - 12.7 PVC B - L1