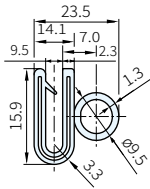


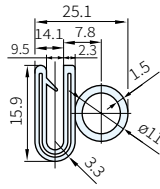


本體	金屬芯	橡膠部
PVC	鋁(A3004)	EPDM

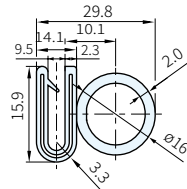
XX3375A



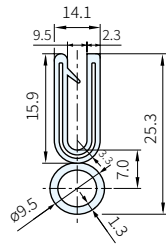
XX4375A



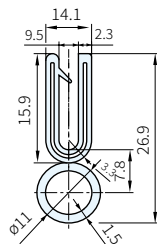
XX6375A



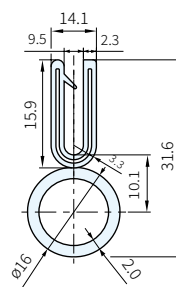
XX3375C



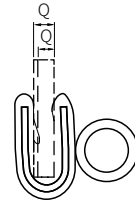
XX4375C



XX6375C



安裝板厚範圍



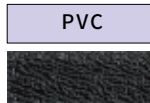
顏色

B (黑)



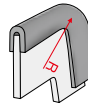
表面紋路

PVC

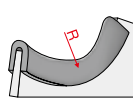


■彎曲方向

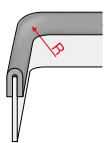
①



②



③



Type	T	材質	顏色	L尺寸 (m)	Q 安裝板厚範圍	最小彎曲半徑mm			庫存
						彎曲方向①	彎曲方向②	彎曲方向③	
XX3375A	9.5	PVC	B	15(單位/捲) 75(單位/捲)	9.0~9.5	40	30	50	△
XX3375C						40	30	50	△
XX4375A	9.5	PVC	B		9.0~9.5	40	30	50	△
XX4375C						40	30	50	△
XX6375A	9.5	PVC	B		9.0~9.5	60	60	50	△
XX6375C						60	60	50	△

備註

- 最小彎曲半徑的數值是實驗值，僅提供參考使用
- 請參考本單元末之產品應用

訂貨：Type - T - 材質 顏色 - L 交期：18 天

XX3375A - 9.5 - PVC B - L15