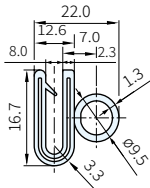


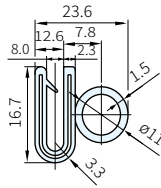


本體	金屬芯	橡膠部
PVC	鋁(A3004)	EPDM

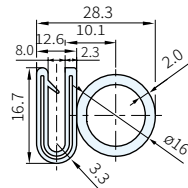
WW3375A



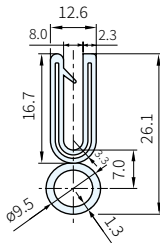
WW4375A



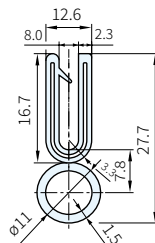
WW6375A



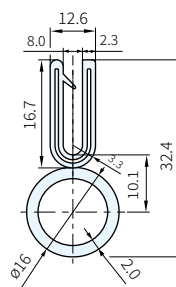
WW3375C



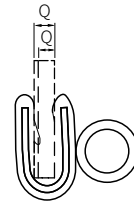
WW4375C



WW6375C



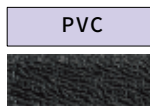
安裝板厚範圍



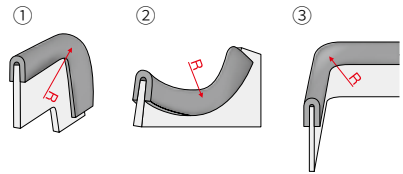
顏色



表面紋路



■彎曲方向



Type	T	材質	顏色	L尺寸 (m)	Q 安裝板厚範圍	最小彎曲半徑mm			庫存
						彎曲方向①	彎曲方向②	彎曲方向③	
WW3375A	8	PVC	B	15(單位/捲) 75(單位/捲)	7.0~8.5	40	30	30	△
WW3375C						40	30	30	△
WW4375A	8	PVC	B		7.0~8.5	40	30	30	△
WW4375C						40	30	30	△
WW6375A	8	PVC	B	7.0~8.5	7.0~8.5	60	60	70	△
WW6375C						60	60	70	△

備註

- 最小彎曲半徑的數值是實驗值，僅提供參考使用
- 請參考本單元末之產品應用

訂貨：Type - T - 材質 - 顏色 - L 交期：18 天

WW3375A - 8 - PVC - B - L15