

RECESSED PULL HH-UD



- Grips on both sides allow the door to be moved in either direction.
- Solid grip interior with rounded edges for optimum comfort.
- The HH-UD156 is compliant with the SEMI S8-0915.

[Recommended Screw]

- M5 screw (length: board thickness +0mm/-3mm)

[Video Link](#)



LARGE HANDLES

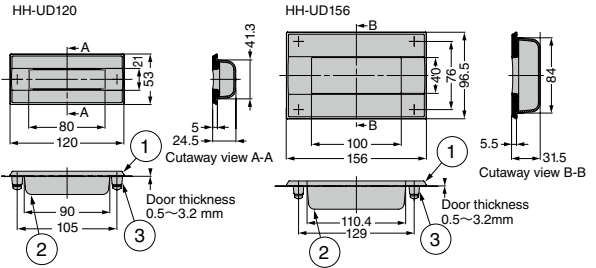
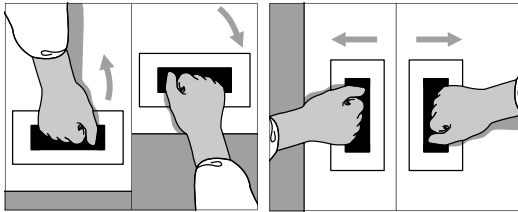
HANDLES (FRONT SCREW MOUNT)

HANDLES (BACK SCREW MOUNT)

RECESSED PULLS

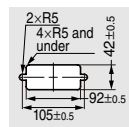
PULLS & KNOBS

LATCH HANDLES

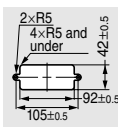


[Cut Out Dimensions]

Sheet metal

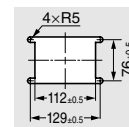


Wood

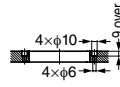
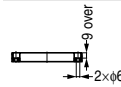
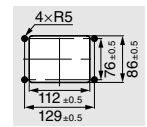


[Cut Out Dimensions]

Sheet metal



Wood



No.	Part Name	Material
①	Body	Stainless Steel (SCS13)
②	Cup	ABS and PC
③	Spacer	Stainless Steel (SUS304)

RHS	CAD	Item Code	Item Name	Finish	Load Capacity N	Load Capacity kgf	Weight (g)	Box (pcs)	Carton (pcs)
		100-037-024	HH-UD120SH	Satin	500	51	193	1	40
		100-037-025	HH-UD120SM	Mirror				1	40
		100-037-026	HH-UD156SH	Satin			502	1	40
		100-037-027	HH-UD156SM	Mirror				1	40