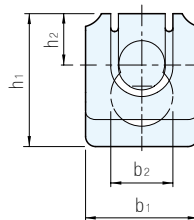
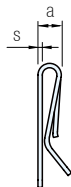
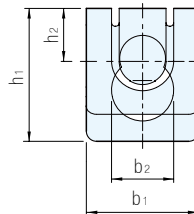
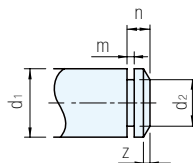


(RoHS)



$d_1=6$



材質	處理
彈簧鋼	鍍鋅

品 號	華 司						max. 軸向推力 (N)	適用軸					單價
	b ₁	b ₂	h ₁	h ₂	a	s		d ₁ h11	d ₂ h11	m +0.1	n	z	
10.06.0000.0004.014	7	4.2	9	3.5	2.2	0.35	1100	4	3.2	0.64	2	0.5	•
10.06.0000.0005.014	9	5.2	11	4.5	2.8		1600	5	4.2		2.5		
10.06.0000.0006.014	11	6.2	13.3	5.5	3.2	0.4	3200	6	5	0.74	3	0.75	•
10.06.0000.0008.014	14	8.2	18	7	4.2	0.6	5500	8	6	0.94	3.5	1	•
10.06.0000.0010.014	18	10.2	22	9	4.3	0.5	9700	10	8	1.05	4.5		•
10.06.0000.0012.014	22	12.2	26	10	5.5	0.6	9900	12	9	1.15	5	1.25	•
10.06.0000.0014.014	25	14.2	30	12	6.5	0.7	11300	14	10	1.25	6		•
10.06.0000.0016.014	28	16.2	37	16	7	0.8	13800	16	12	1.35	1.5	•	

Ps. 備註

・組立時不用工具亦可

訂貨： 交期：

10.06.0000.0004.014

Ex. 使用例

