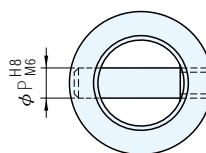
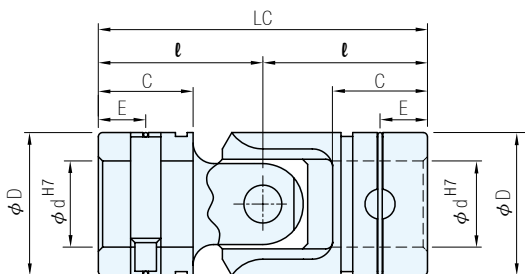


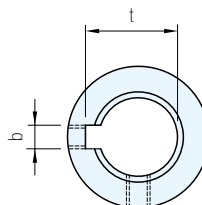
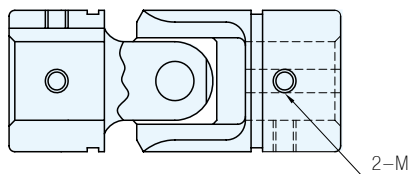
RoHS



型式		材質	處理
SJ型	圓孔	SCM415	滲碳熱處理
SJ-KT型	鍵槽		



SJ型



SJ-KT型

圓孔		鍵槽		d <sub>H7</sub>	D	LC	l	C	E	P	b × t JS9 × <sup>+0.2</sup> / <sub>+0</sub>	M	扭力 (kgf-m)	靜荷載 (kgf-m)	容許 角度	質量 (g)				
品號	單價	品號	單價																	
SJ-4	•	-	-	4	8	24	12.0	7.0	4.0	1.5	-	-	0.1	122.0	30°	8				
SJ-5	•			5	10	30	15.0	9.0	5.0	2.0			0.3	204.0		12				
SJ-6	•			6	12	31	15.5		4.5	3.0			0.5	540.8		15				
SJ-8	•			8	15	36	18.0	10.0	5.0	3.5			1.2	799.5		30				
SJ-10	•			10	19	42	21.0	12.0	6.0	4.5			3 × 11.4	2.8		1325.6	55			
SJ-12	•			SJ-12KT	•	12	23	52	26.0	15.0			7.5	5.0		4 × 13.8	M5	4.7	2345.3	110
SJ-14	•			SJ-14KT	•	14	26	59	29.5	17.0			8.5	5.8		5 × 16.3	M6	6.7	2651.3	155
SJ-16	•			SJ-16KT	•	16	30	74	37.0	22.0			11.0	6.5		5 × 18.3		10.4	3976.9	260
SJ-18	•			SJ-18KT	•	18	33	81	40.5	23.5			11.75	7.0		6 × 20.8	M8	13.5	4486.8	345
SJ-20	•			SJ-20KT	•	20	36	87	43.5	25.0			12.5	8.0		6 × 22.8		17.8	5302.5	465
SJ-22	•	SJ-22KT	•	22	40	94	47.0	27.0	13.5	9.0	6 × 24.8	25.6	6934.1	630						
SJ-25	•	SJ-25KT	•	25	44	105	52.5	30.0	15.0	10.0	8 × 28.3	33.7	8259.7	790						

訂貨：品號 交期：8 天