



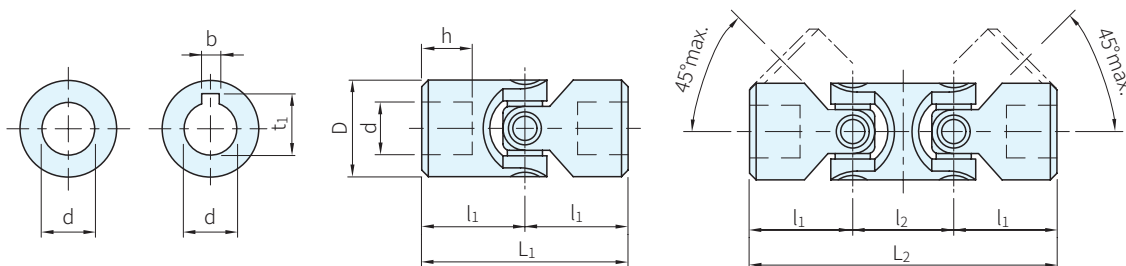
材質  
硬化鋼

圓孔

鍵槽  
(DIN6885/1)

A型(單萬向節)

B型(雙萬向節)



A 型		B 型		L <sub>1</sub>	L <sub>2</sub>	l <sub>2</sub>	D	l <sub>1</sub>	d (H7)	b	t <sub>1</sub>	h max. +1 0	庫存
圓孔 品號	鍵槽 品號	圓孔 品號	鍵槽 品號										
SGR808-0410	SGR808-0610	SGR808-0510	SGR808-0710	48	74	26	22	24	10	3	11.4	12	△
SGR808-0412	SGR808-0612	SGR808-0512	SGR808-0712	62	88			31	12	4	13.8	18	△
SGR808-0414	SGR808-0614	SGR808-0514	SGR808-0714	56	86	30	25	28	16	5	18.3	21	△
SGR808-0416	SGR808-0616	SGR808-0516	SGR808-0716	74	104			37			16	18.3	21
SGR808-0418	SGR808-0618	SGR808-0518	SGR808-0718	60	96	36	28	30	14	6	16.3	13	△
SGR808-0420	SGR808-0620	SGR808-0520	SGR808-0720	68	105	37	32	34	16		18.3	16	△
SGR808-0422	SGR808-0622	SGR808-0522	SGR808-0722	86	124	38		36	43	20	22.8	24	△
SGR808-0424	SGR808-0624	SGR808-0524	SGR808-0724	74	114	40	42		37	18	20.8	17	△
SGR808-0426	SGR808-0626	SGR808-0526	SGR808-0726	82	128	46		58	41	20	22.8	18	△
SGR808-0428	SGR808-0628	SGR808-0528	SGR808-0728	108	156	48	50		54	25	8	28.3	31
SGR808-0430	SGR808-0630	SGR808-0530	SGR808-0730	95	145	50		50	45	22	6	24.8	22
SGR808-0432	SGR808-0632	SGR808-0532	SGR808-0732	108	163	55	68		54	25	8	28.3	26
SGR808-0434	SGR808-0634	SGR808-0534	SGR808-0734	132	188	56		58	66	30	8	33.3	38
SGR808-0436	SGR808-0636	SGR808-0536	SGR808-0736	122	190	68	58		61	30		33.3	29
SGR808-0438	SGR808-0638	SGR808-0538	SGR808-0738	130	198			65	32	10	35.3	33	△

Ps. 備註

· 方孔是訂製品項，歡迎洽詢

訂貨：  交期：

SGR808-0410