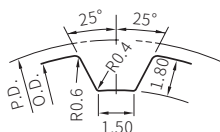


RoHS



Type	皮帶寬度				材質		處理	附屬品 固定螺絲材質
	10.0mm T5100	15.0mm T5150	20.0mm T5200	25.0mm T5250	皮帶輪	法蘭		
BBSW	○	○	○	○	鋁合金	鋁合金	白陽極	SUS304
BBST	○	○	○	○			黑陽極	
BBSF	○	○	○	○			硬陽極	
BBSM	○	○	○	○			無電解鍍	
BBSB	○	○	○	○			-	
BBSN	○	○	○	○	≈S45C	SPCC	染黑	SCM435 (染黑)
BBS	○	○	○	○			無電解鍍	



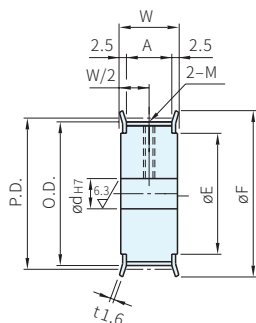
(Pitch=5.0mm)

攻牙孔尺寸表

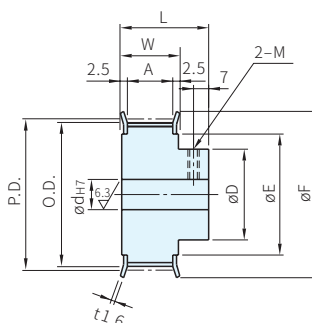
(軸孔:P·N)

dH7 軸孔內徑	M 粗螺紋	附屬品 固定螺絲
5	M3	M3
6~12	M4	M4
13~17	M5	M5
18~30	M6	M6
31~50	M8	M8

A



B



齒數

mm	12	14	15	16	18	20	22	24	25	26	28	30	32	34	36	40	44	48	50
P.D.	19.10	22.28	23.87	25.46	28.65	31.83	35.01	38.20	39.79	41.38	44.56	47.75	50.93	54.11	57.30	63.66	70.03	76.39	79.58
O.D.	18.25	21.45	23.05	24.60	27.80	31.00	34.25	37.40	39.00	40.60	43.75	46.95	50.10	53.25	56.45	62.85	69.20	75.55	78.75
D	-	14	15	17	19	19	24	27	27	31	32	33	37	40	40	47	50	60	63
F	24	26	28	32	33	36	40	45	45	48	48	52	55	61	61	67	74	83	87
E	12	16	18	20	22	24	27	30	30	35	35	36	40	45	45	50	58	63	67

Wa 注意

· 軸孔規格為P、N時，附攻牙孔和固定螺絲

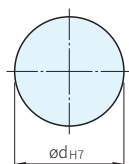
軸孔規格

· 請從下表選出軸孔規格符號與各尺寸  
· 軸孔內有可能沒有做表面處理

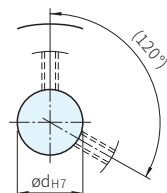
皮帶寬度

mm	No.			
	T5100	T5150	T5200	T5250
A	11.0	17.0	22.0	27.0
W	16.0	22.0	27.0	32.0
L	28.0	34.0	39.0	44.0

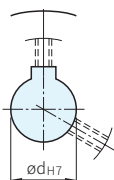
H 圓孔



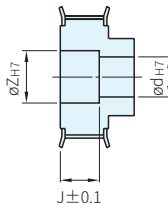
P 圓孔+攻牙



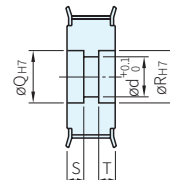
N JIS鍵槽孔+攻牙



V 軸頸孔

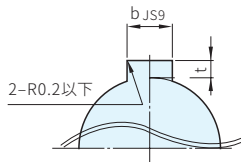


Y 兩端軸頸孔



鍵槽尺寸表

軸孔			鍵槽			
規格	軸孔	公差	b	js9	t	公差
N	8	+0.015	3	±0.0125	1.4	+0.1 0
N	10	0				
N	11~12	+0.018	4	±0.0150	1.8	
N	13~17		5		2.3	
N	18		6		2.8	
N	19~22	+0.021	6	±0.0150	3.3	
N	23~30	0	8			
N	31	+0.025	10	±0.0180	3.3	



型式		皮帶輪 形狀	皮帶輪形狀															
Type	齒數		皮帶 寬度 No.	A						B								
				(~)指定單位1mm						(~)指定單位1mm								
			H	P	N	V		Y			H	P	N	V				
			d	d	d	d	Z	J 0.1mm	Y	Q·R	S·T 0.1mm	d	d	d	d	Z	J 0.1mm	
BBSW BBST BBSF BBSM	12	T5100	A	5-8	5-8	8	5-6	7-8		5-6	7-8		-	-		-	-	-
	14		A	5-12	5-10	8·10	5-10	7-12		5-10	7-12		5-10	5-8	-	5-8	7-10	
	15		A	5-14	5-10	8·10	5-12	7-14		5-12	7-14		5-11	5-8		5-9	7-11	
	16		A	6-16	6-12	8-12	6-14	8-16		6-14	8-16		6-13	6-10	8	6-11	8-13	
	18		A	6-18	6-12	8-12	6-16	8-18		6-16	8-18		6-15	6-11	8·10	6-13	8-15	
	20		A	6-20	6-16	8-16	6-18	8-20		6-18	8-20		6-15	6-12	8·10	6-13	8-15	
	22		A	7-23	7-18	8-18	7-21	9-23		7-21	9-23		7-20	7-15	8-12	7-18	9-20	
	24		A	7-26	7-20	8-20	7-24	9-26		7-24	9-26		7-23	7-17	8-13	7-21	9-23	
	25		A	7-26	7-20	8-20	7-24	9-26		7-24	9-26		7-23	7-18	8-15	7-21	9-23	
	26		A	8-31	8-23	8-22	8-29	10-31	2.0≤J≤W-2.0	8-29	10-31	3~14 S+T≤W-3	8-27	8-21	8-17	8-25	10-27	2.0≤J≤L-2.0
BBSB BBSN BBSS	28	T5200	B	8-31	8-24	8-24	8-29	10-31		8-29	10-31		8-28	8-22	8-18	8-26	10-28	
	30	T5200	B	10-32	10-26	10-26	10-30	12-32		10-30	12-32		10-29	10-23	10-18	10-27	12-29	
	32	T5250	B	10-36	10-28	10-28	10-34	12-36		10-34	12-36		10-33	10-27	10-22	10-31	12-33	
	34	T5250	B	10-41	10-30	10-30	10-39	12-41		10-39	12-41		10-36	10-30	10-25	10-34	12-36	
	36	T5250	B	10-41	10-30	10-30	10-39	12-41		10-39	12-41		10-36	10-30	10-25	10-34	12-36	
	40	T5250	B	10-46	10-38	10-38	10-44	12-46		10-44	12-46		10-43	10-37	10-30	10-41	12-43	
	44	T5250	B	12-54	12-42	12-40	12-52	14-54		12-52	14-54		12-46	12-40	12-32	12-44	14-46	
	48	T5250	B	12-59	12-47	12-40	12-57	14-59		12-57	14-59		12-56	12-45	12-40	12-54	14-56	
	50	T5250	B	12-63	12-50	12-45	12-61	14-63		12-61	14-63		12-59	12-47	12-45	12-57	14-59	

訂貨：  -  -  -  -  -  -  -  -  交期:  天

(軸孔規格:H·P·N)

(軸孔規格:V)

(軸孔規格:Y)

BBSW18T5100 - A - P5  
 BBSW30T5200 - A - V10 - Z23 - J16.0  
 BBSW48T5150 - A - Y25 - Q42 - R37 - S9 - T7