

- 1
- 2
- 3
- 4
- 5
- 6
- 7
- 8
- 9
- 10
- 11
- 12
- 13
- 14
- 15
- 16
- 17
- 18

MATERIAL

Glass-fibre reinforced polyamide based (PA) technopolymer certified self-extinguishing UL-94 V0, black colour, matte finish.

STANDARD EXECUTIONS

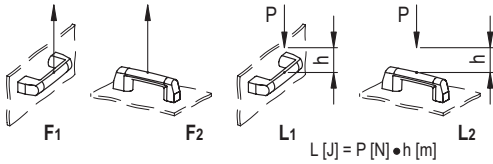
Brass bushings, M6 threaded blind holes for rear mounting.

APPLICATIONS

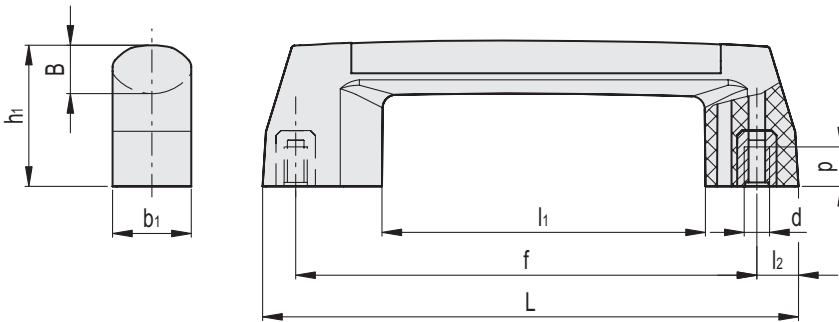
The M.2000 handle can be combined with M.2000-SWM handles with monostable electrical switch.

TECHNICAL DATA

Tensile stress and impact strength: the values F1, F2, L1 and L2 indicated in the table were obtained during breaking tests carried out under the test conditions shown in the figure with ambient temperature.



ELESA Original design



Code	Description	L	f±1	d	h1	B	b1	l1	l2	p	F1 [N]	F2 [N]	L1 [J]	L2 [J]	
260830-C1	M.2000/180-B-M6	212.5	180	M6	65	24	35	113	20	12	700	900	7	6	210