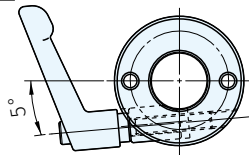


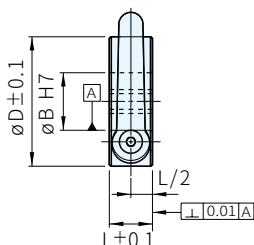
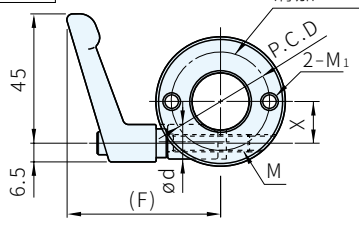


本體		把手	
材質	處理	材質	顏色
S45C	染黑	鋅合金	銀灰·橘
SUS304	-	鋅合金	銀灰·橘

∅B:10~16



∅B:20~50



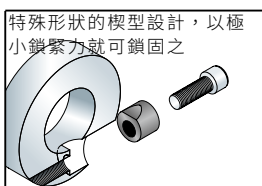
· 端面有溝側和對象物安裝在一起

S45C			SUS304			B	L	D	螺紋		d	X	(F)	M		
品號	把手顏色	庫存	品號	把手顏色	庫存				M ₁	P.C.D						
SCK1015CN2S	銀灰	△	SCK1015SN2S	銀灰	△	10	15	35	M4×0.7	24	12.1	9.5	49.8	M6×25		
SCK1215CN2S		△	SCK1215SN2S		△	12	15	38	M5×0.8	24	12.1	10.5	50	M6×25		
SCK1515CN2S		△	SCK1515SN2S		△	15	15	40	M6×1	28	12.1	12	53.4	M6×32		
SCK1615CN2S		△	SCK1615SN2S		△	16	15	42	M6×1	28	12.1	12	54.5	M6×32		
SCK2015CN2S		△	SCK2015SN2S		△	20	15	46	M6×1	34	12.1	14	55	M6×32		
SCK2515CN2S		△	SCK2515SN2S		△	25	15	50	M6×1	38	12.1	16.5	55.6	M6×32		
SCK3015CN2S		△	SCK3015SN2S		△	30	15	56	M6×1	44	12.1	19	59.1	M6×40		
SCK3520CN2S		△	SCK3520SN2S		△	35	20	65	M6×1	48	14.1	22.5	60.7	M6×40		
SCK4020CN2S		△	SCK4020SN2S		△	40	20	70	M6×1	56	14.1	25	65.4	M6×50		
SCK5020CN2S		△	SCK5020SN2S		△	50	20	85	M6×1	68	14.1	29.5	72.7	M6×50		
SCK1015CN2O		橘	△		SCK1015SN2O	橘	△	10	15	35	M4×0.7	24	12.1	9.5	49.8	M6×25
SCK1215CN2O			△		SCK1215SN2O		△	12	15	38	M5×0.8	24	12.1	10.5	50	M6×25
SCK1515CN2O	△		SCK1515SN2O	△	15		15	40	M6×1	28	12.1	12	53.4	M6×32		
SCK1615CN2O	△		SCK1615SN2O	△	16		15	42	M6×1	28	12.1	12	54.5	M6×32		
SCK2015CN2O	△		SCK2015SN2O	△	20		15	46	M6×1	34	12.1	14	55	M6×32		
SCK2515CN2O	△		SCK2515SN2O	△	25		15	50	M6×1	38	12.1	16.5	55.6	M6×32		
SCK3015CN2O	△		SCK3015SN2O	△	30		15	56	M6×1	44	12.1	19	59.1	M6×40		
SCK3520CN2O	△		SCK3520SN2O	△	35		20	65	M6×1	48	14.1	22.5	60.7	M6×40		
SCK4020CN2O	△		SCK4020SN2O	△	40		20	70	M6×1	56	14.1	25	65.4	M6×50		
SCK5020CN2O	△		SCK5020SN2O	△	50		20	85	M6×1	68	14.1	29.5	72.7	M6×50		

Wa 注意

· 把手的鎖固力矩≤4.5 (N · m)

Ex 使用例



特殊形狀的楔型設計，以極小鎖緊力就可鎖固之

訂貨： 交期： 天

SCK1015CN2S