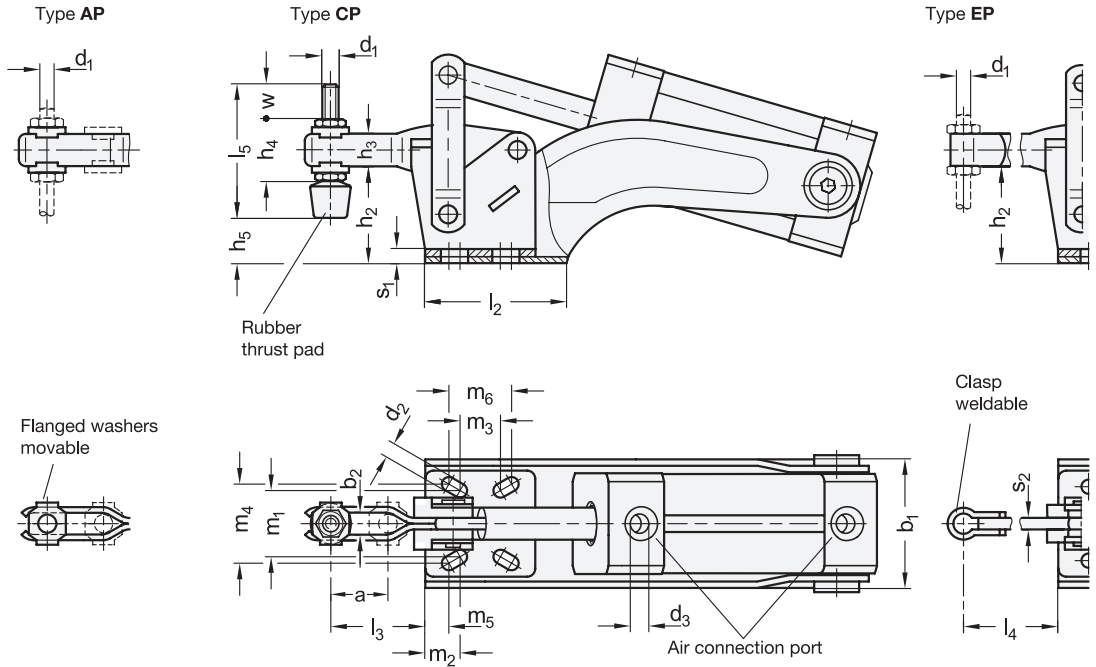


- 2 Type**
- AP** Forked clamping arm, with two flanged washers
  - CP** Forked clamping arm, with two flanged washers and clamping screw GN 708.1
  - EP** Solid clamping arm, with clasp for welding
- 3 Coding**
- M** Magnetic piston

**1**

| Size | F <sub>H</sub> in N<br>Holding capacity | F <sub>S</sub> in N<br>Clamping force at 6 bar ≈ | a ≈ | b <sub>1</sub> | b <sub>2</sub> | d <sub>1</sub> | d <sub>2</sub> | d <sub>3</sub><br>Compressed air connections | Inside Ø<br>Connection tube | h <sub>1</sub> | h <sub>2</sub> | h <sub>3</sub> | h <sub>4</sub> | h <sub>5</sub> |
|------|---|--|-----|----------------|----------------|----------------|----------------|--|-----------------------------|----------------|----------------|----------------|----------------|----------------|
| 75   | 700                                     | 380  | 20  | 40             | 5,2            | M 5            | 4,5            | M 5  | 4                           | 54             | 22             | 11             | 19             | 7,3            |
| 130  | 1600                                    | 800  | 28  | 47,5           | 6,2            | M 6            | 5,6            | G 1/8  | 4                           | 66             | 30             | 16             | 25,5           | 13,5           |
| 230  | 2200                                    | 1200   | 40  | 52             | 8,2            | M 8            | 6,7            | G 1/8  | 4                           | 78             | 36             | 18             | 30             | 12,5           |
| 330  | 2500                                    | 1750   | 45  | 74             | 10,5           | M 10           | 8,6            | G 1/4  | 6                           | 96             | 46             | 22             | 37             | 18             |
| 430  | 4000                                    | 3200   | 48  | 73             | 12,5           | M 12           | 8,5            | G 1/4  | 8                           | 115            | 55             | 26             | 43             | 22,5           |

| Size | l <sub>1</sub> ≈<br>Type AP<br>Type CP | Type EP | l <sub>2</sub> ≈ | l <sub>3</sub> ≈ | l <sub>4</sub> ≈<br>max. | l <sub>5</sub> | m <sub>1</sub> | m <sub>2</sub> | m <sub>3</sub> | m <sub>4</sub> | m <sub>5</sub> | m <sub>6</sub> | r ≈<br>Type AP<br>Type CP | Type EP | s <sub>1</sub> | s <sub>2</sub> | w<br>Adjustable range |
|------|--|---------|------------------|------------------|--------------------------|----------------|----------------|----------------|----------------|----------------|----------------|----------------|---------------------------|---------|----------------|----------------|-----------------------|
| 75   | 162,5                                  | 163     | 40               | 32               | 42                       | 45             | 24             | 7              | 14,5           | 24             | 6,5            | 16,5           | 62,5                      | 63      | 4              | 4              | 15                    |
| 130  | 195                                    | 196     | 45               | 42               | 54                       | 55             | 27             | 11,2           | 12,5           | 29             | 8              | 19             | 79                        | 80      | 5              | 5              | 17,5                  |
| 230  | 259                                    | 260     | 55               | 57,5             | 75                       | 68             | 32             | 12             | 18,5           | 32             | 11,5           | 20,5           | 104                       | 105     | 6              | 6              | 20                    |
| 330  | 308                                    | 310     | 64               | 67               | 85                       | 77             | 46             | 10,5           | 29             | 45             | 9              | 32             | 121                       | 123     | 7              | 7              | 19                    |
| 430  | 364                                    | 365     | 78               | 73               | 98                       | 100            | 45             | 14             | 32             | 45             | 14             | 32             | 140                       | 141     | 8              | 10             | 33                    |



## Specification

- Sheet metal parts  
Case-hardened steel C10  
Zinc plated, blue passivated
- Bearing pins hardened
- Bearing rivets  
case-hardened
- Air cylinder bearing pins  
case-hardened
- Double-action air cylinder  
Max. pressure 6 bar
- All moving parts  
Lubricated with special grease
- Clamping screw GN 708.1, type A  
- Steel, zinc plated, blue passivated  
- Rubber thrust pad 85 Shore A

• RoHS

## Accessory

- Clamping Screws → Page 810 ff.
- Holders for Clamping Screws GN 801  
(for Type AP) → Page 815
- Holders for Clamping Screws GN 809  
(for Type EP) → Page 818
- Sensor GN 3380 → Page 850

## Information

The clamping principle of toggle clamps GN 860 is identical in construction and dimensions to the manually operated vertical toggle clamps GN 810.

To ensure an extended life of the mechanical parts as well as the air cylinders, the operating pressure should not exceed 6 bar and a compressed air maintenance unit should be installed upstream.

Toggle clamps GN 860 have a permanent magnet integrated into the piston. In conjunction with sensors GN 3380, it is possible to detect the end position, such as for implementing machine controls.

see also...

- [More Information to Toggle Clamps \(Pneumatic\)](#) → Page 790

How to order

GN 860-330-AP-M

|   |        |
|---|--------|
| 1 | Size   |
| 2 | Type   |
| 3 | Coding |

