

Ball Lock Pins • single acting - comply with NASM / MS17987

EH 4213.



Product Description

Ball Lock Pins according to NASM (former norm: MS) are used for quick fastening, locking, adjusting, changing and securing. Quickly and easily unlockable for frequently repeated connections.

Ball Lock Pins (Quick Release Pins) are produced according to Aviation Norm NASM (former norm: MS) and tested to NAS 1332.

Material

Body

- Stainless steel, precipitation-hardened, passivated

Spindle

- Stainless steel, precipitation-hardened, passivated

Spring

- Stainless steel, passivated

Handle

- Stainless steel, passivated

Attaching ring

- Stainless steel, passivated

Press button

- Stainless steel, passivated

Ball

- Stainless steel, precipitation-hardened, passivated

Operation

Ball lock pins single acting are self-locking and require a push of the button to release the balls.

More information

Notes

All further dimensions are available on request.

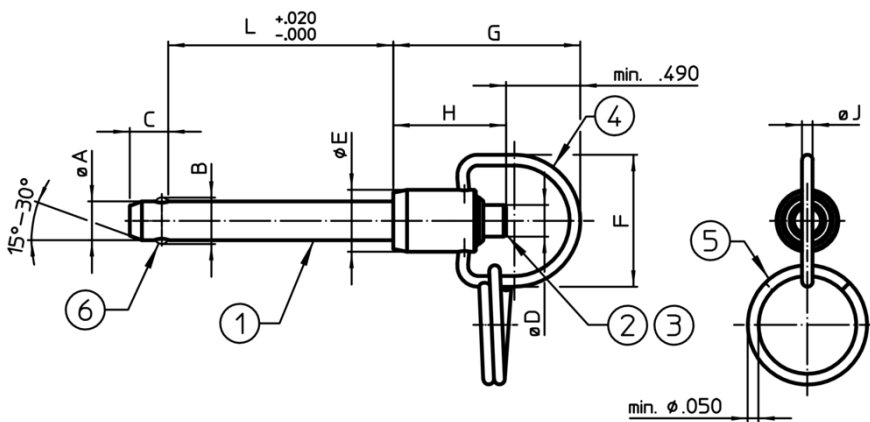
Special types on request.

- This product is manufactured in INCH dimensions.

References

A conversion table can be found in the technical data following these product information pages.

Drawing



Order information

Nominal diameter A	A		Clamping length L +0.02 0	Dimensions							Location hole max.	Shearing resistance, two-shear min.	Temperature		Weight [g]	Standard description	Art. No.	
	min.	max.		B ±0.005	C 0 -0.04	D max.	E max.	F min.	G max.	H min.			J min.	min.				max.
[inch]																		
3/16	0.1870	0.1885	0.3	0.220	0.260	0.310	0.53	1.06	1.45	0.73	0.08	0.1940	5,150	-65	200	20	MS17987C303	4213.A03
3/16	0.1870	0.1885	0.5	0.220	0.260	0.310	0.53	1.06	1.45	0.73	0.08	0.1940	5,150	-65	200	21	MS17987C305	4213.A05
3/16	0.1870	0.1885	0.6	0.220	0.260	0.310	0.53	1.06	1.45	0.73	0.08	0.1940	5,150	-65	200	22	MS17987C306	4213.A06
3/16	0.1870	0.1885	0.7	0.220	0.260	0.310	0.53	1.06	1.45	0.73	0.08	0.1940	5,150	-65	200	23	MS17987C307	4213.A07
3/16	0.1870	0.1885	0.8	0.220	0.260	0.310	0.53	1.06	1.45	0.73	0.08	0.1940	5,150	-65	200	24	MS17987C308	4213.A08
3/16	0.1870	0.1885	0.9	0.220	0.260	0.310	0.53	1.06	1.45	0.73	0.08	0.1940	5,150	-65	200	24	MS17987C309	4213.A09
3/16	0.1870	0.1885	1.0	0.220	0.260	0.310	0.53	1.06	1.45	0.73	0.08	0.1940	5,150	-65	200	24	MS17987C310	4213.A10

Nominal diameter A	Dimensions											Location hole max.	Shearing resistance, two-shear		min. max.		Standard description	Art. No.
	A min.	A max.	Clamping length L +0.02 0	B ±0.005	C 0 -0.04	D max.	E max.	F min.	G max.	H min.	J min.		min.	max.	min.	max.		
	[inch]												[inch]	[lbf]	[°F]			
1/2	0.4970	0.4985	5.0	0.594	0.460	0.565	0.80	1.16	1.85	1.14	0.08	0.5050	36,900	-65	200	186	MS17987C850	4213.F50
1/2	0.4970	0.4985	5.3	0.594	0.460	0.565	0.80	1.16	1.85	1.14	0.08	0.5050	36,900	-65	200	193	MS17987C853	4213.F53
1/2	0.4970	0.4985	5.5	0.594	0.460	0.565	0.80	1.16	1.85	1.14	0.08	0.5050	36,900	-65	200	199	MS17987C855	4213.F55
1/2	0.4970	0.4985	5.8	0.594	0.460	0.565	0.80	1.16	1.85	1.14	0.08	0.5050	36,900	-65	200	207	MS17987C858	4213.F58
1/2	0.4970	0.4985	6.5	0.594	0.460	0.565	0.80	1.16	1.85	1.14	0.08	0.5050	36,900	-65	200	215	MS17987C865	4213.F65
1/2	0.4970	0.4985	8.0	0.594	0.460	0.565	0.80	1.16	1.85	1.14	0.08	0.5050	36,900	-65	200	263	MS17987C880	4213.F80
9/16	0.5595	0.5610	1.0	0.666	0.510	0.565	0.84	1.16	2.03	1.14	0.08	0.5675	46,700	-65	200	105	MS17987C910	4213.G10
9/16	0.5595	0.5610	1.2	0.666	0.510	0.565	0.84	1.16	2.03	1.14	0.08	0.5675	46,700	-65	200	110	MS17987C912	4213.G12
9/16	0.5595	0.5610	1.3	0.666	0.510	0.565	0.84	1.16	2.03	1.14	0.08	0.5675	46,700	-65	200	113	MS17987C913	4213.G13
9/16	0.5595	0.5610	1.5	0.666	0.510	0.565	0.84	1.16	2.03	1.14	0.08	0.5675	46,700	-65	200	-	MS17987C915	4213.G15
9/16	0.5595	0.5610	2.0	0.666	0.510	0.565	0.84	1.16	2.03	1.14	0.08	0.5675	46,700	-65	200	-	MS17987C920	4213.G20
9/16	0.5595	0.5610	2.2	0.666	0.510	0.565	0.84	1.16	2.03	1.14	0.08	0.5675	46,700	-65	200	-	MS17987C922	4213.G22
9/16	0.5595	0.5610	2.5	0.666	0.510	0.565	0.84	1.16	2.03	1.14	0.08	0.5675	46,700	-65	200	150	MS17987C925	4213.G25
9/16	0.5595	0.5610	2.7	0.666	0.510	0.565	0.84	1.16	2.03	1.14	0.08	0.5675	46,700	-65	200	156	MS17987C927	4213.G27
9/16	0.5595	0.5610	2.8	0.666	0.510	0.565	0.84	1.16	2.03	1.14	0.08	0.5675	46,700	-65	200	159	MS17987C928	4213.G28
9/16	0.5595	0.5610	3.0	0.666	0.510	0.565	0.84	1.16	2.03	1.14	0.08	0.5675	46,700	-65	200	166	MS17987C930	4213.G30
9/16	0.5595	0.5610	3.7	0.666	0.510	0.565	0.84	1.16	2.03	1.14	0.08	0.5675	46,700	-65	200	187	MS17987C937	4213.G37
9/16	0.5595	0.5610	4.2	0.666	0.510	0.565	0.84	1.16	2.03	1.14	0.08	0.5675	46,700	-65	200	-	MS17987C942	4213.G42
9/16	0.5595	0.5610	5.5	0.666	0.510	0.565	0.84	1.16	2.03	1.14	0.08	0.5675	46,700	-65	200	245	MS17987C955	4213.G55
9/16	0.5595	0.5610	6.5	0.666	0.510	0.565	0.84	1.16	2.03	1.14	0.08	0.5675	46,700	-65	200	-	MS17987C965	4213.G65

Compliance

RoHS compliant

Compliant according to Directive 2011/65/EU and Directive 2015/863

Does not contain SVHC substances

No SVHC substances with more than 0.1% w/w contained - SVHC list [REACH] as of 10.06.2022

Does not contain Proposition 65 substances

No Proposition 65 substances included

<https://www.P65Warnings.ca.gov/>

Free from Conflict Minerals

This product does not contain any substances designated as "conflict minerals" such as tantalum, tin, gold or tungsten from the Democratic Republic of Congo or adjacent countries.