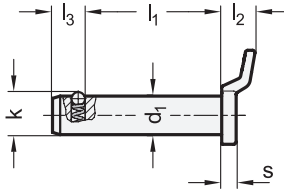
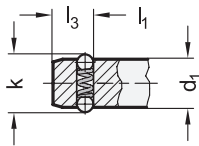


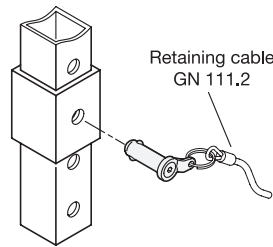
Pin Ø 8
Ball retainer one-sided



Pin Ø 10 / 12
Ball retainer both-sided



Application example



3 Type
E With eyelet washer

1 2

d ₁	l ₁					d ₂	d ₃	k	l ₂	l ₃	l ₄	s	Locating bore	Axial holding force in N ≈
8	15	20	25	30	50	12	2,5	8,7	7	6,3	13,5	3	8	15
10	15	20	25	30	50	15	2,5	12	7	8,7	15	3	10	30
12	20	30	40	50	-	17	3	14,5	9	9,5	18,5	4	12	32

Specification

- Pin
Stainless steel AISI 303
- Washer
Stainless steel AISI 316LHC
Metal injection molded
- Ball
Stainless steel AISI 420C
- Compression spring
Stainless steel AISI 631
- Load Capacity → Page QVX
- Stainless Steel Characteristics → Page QVX
- RoHS

Accessory

- Ball Chains GN 111 / GN 111.5 → Page QVX
- Stainless Steel Retaining Cables GN 111.2
→ Page QVX
- Spiral Retaining Cables GN 111.4
→ Page QVX

Information

Stainless steel locking pins GN 124.3 are used for quick fixing, connecting and locking of various jig and fixture systems.

The locking balls are held in position by a compression spring and are therefore not rigidly locked. The pins can be quickly and easily inserted and removed from the locating hole.

The technical annex contains the load ratings for the double shear strength (breaking strength).

see also...

- List of Lock Pin Types → Page QVX
- Stainless Steel Locking Pins GN 114.3 → Page QVX
- Stainless Steel Locking Pins GN 314 (Lockable) → Page QVX
- Stainless Steel Assembly Pins GN 2342 → Page QVX
- Guide Bushings DIN 172 → Page QVX
- Guide Bushings DIN 179 → Page QVX

How to order

GN 124.3-12-40-E

- 1 d₁
- 2 l₁
- 3 Type

3.1
3.2
3.3
3.4
3.5
3.6
3.7
3.8
3.9