

RoHS



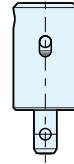
QCSJ0514A



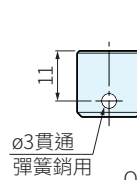
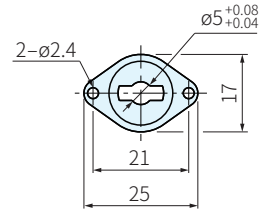
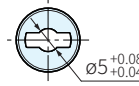
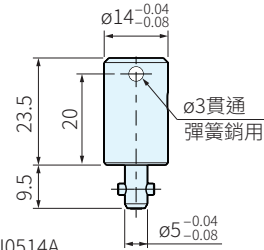
QCSJ0514-S
(軸用)



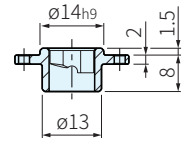
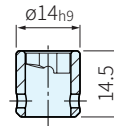
QCSJ0514-B
(板用)



QCSJ0514A



QCSJ0514-S
(軸用)



QCSJ0514-B
(板用)

TYPE	本體、軸	銷子	彈簧
QCSJ0514A	S45C	SUS304	SWOSC-V
QCSJ0514-S	SCM440	-	-
QCSJ0514-B	-	-	-

品號	夾緊力 N	質量 g	庫存	品號	質量 g	庫存
QCSJ0514A	90	25	△	QCSJ0514-S	10	△
-	-	-	-	QCSJ0514-B	8	△

WA. 注意

- QCSJ0514A、QCSJ0514-B 用的彈簧銷請客戶自行準備

TE. 技術資料

- 耐熱溫度180°C
- 承載能力：剪切強度1800N，抗拉強度1200N

訂貨： 交期： 天

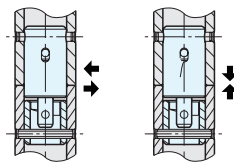
QCSJ0514A

PS. 備註

- QCSJ0514-B附屬品：
內六角螺栓(SUS制)M2×0.4-5L...2根

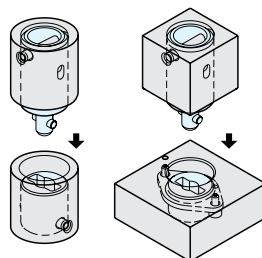
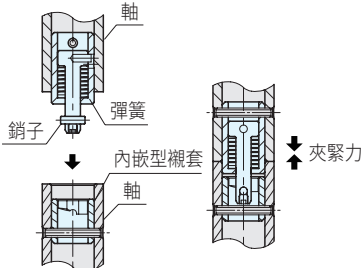
SP. 特長

- 銷子和內嵌型凸輪套內部的凸輪面接觸，旋轉並使彈簧壓縮，從而拉緊兩根軸

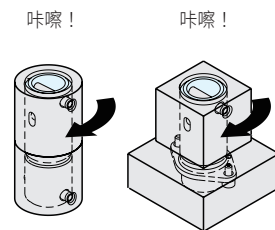


剪切強度1800N 抗拉強度1200N

【操作步驟】



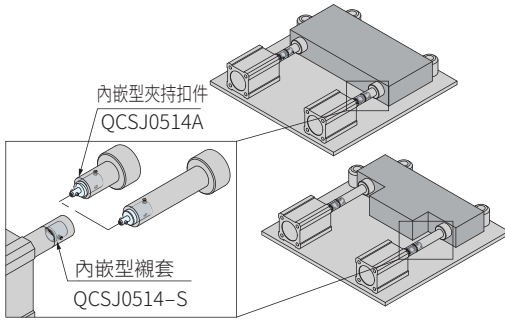
1. 對準銷子和套子孔的朝向之後插入



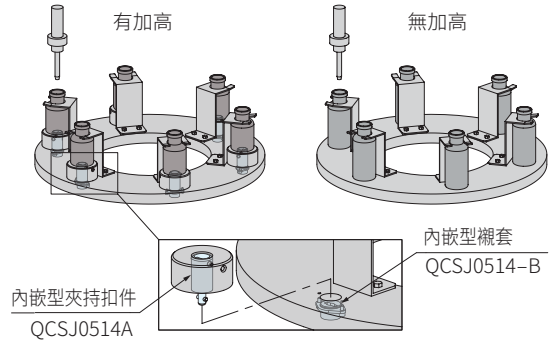
2. 請旋轉90°進行鎖緊，夾緊時有單擊感
※鬆開時，請按相反的順序操作

EX. 使用例

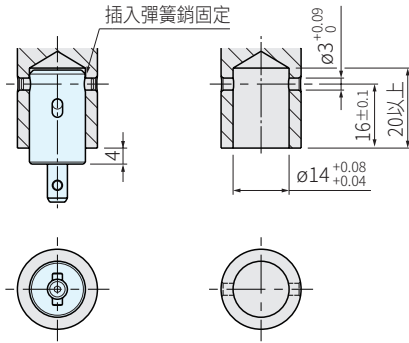
■ 推進組合件的交換



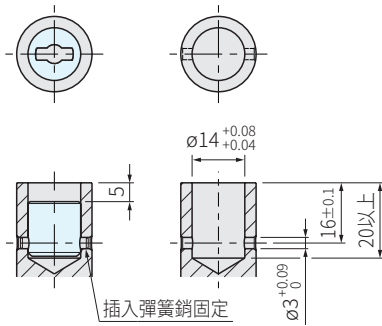
■ 加高墊板的交換



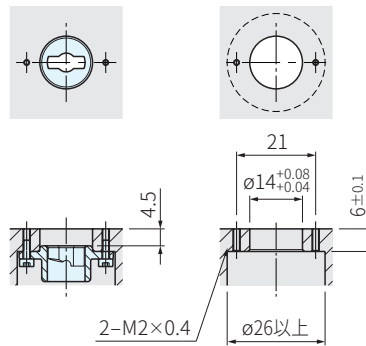
【內嵌型夾持扣件的安裝方法】



【內嵌型襯套(軸用)的安裝方法】



【內嵌型襯套(板用)的安裝方法】



WA. 注意

- 由於工件形狀不同，請考量夾緊時工件的朝向，再加工彈簧銷用孔

【重覆定位精度】

- 重覆定位精度為±0.08，需要高精度的定位時，請使用承插

