

TCC-CR | Two-way connecting clamps

Technopolymer



- 1
- 2
- 3
- 4
- 5
- 6
- 7
- 8
- 9
- 10
- 11
- 12
- 13
- 14
- 15
- 16
- 17
- 18

CLAMP

Glass-fibre reinforced polyamide based (PA) technopolymer, RAL 9005 (C9) black colour or grey RAL 7040 (C33) colour, matte finish.

SCREWS AND NUTS (SUPPLIED)

Cylindrical-head screw with hexagon socket in AISI 304 stainless steel with anti-seizure treatment.

Self-locking nuts in AISI 304 stainless steel.

FEATURES

Clamps for tubes with a diameter of 18 ± 0.2 and 30 ± 0.2 mm.

For smaller diameter tubes, the hole reduction sleeve TCC-A can be used (ordered separately).

The "s" grub screws may be replaced by the kit TCC-KS.

TECHNICAL DATA

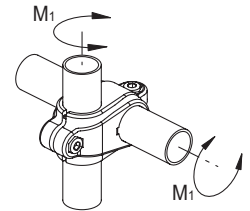
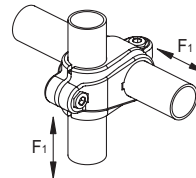
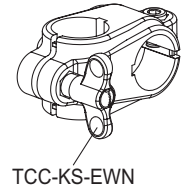
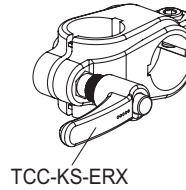
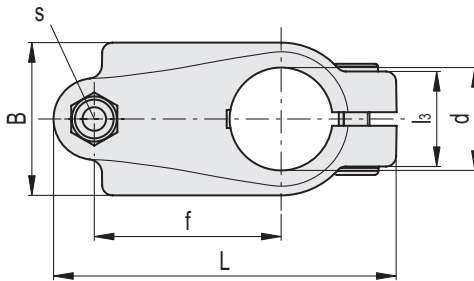
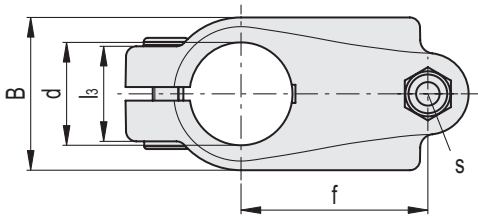
The resistance values shown in the table were measured during laboratory tests at ambient temperature with the screws tightened to the maximum torque "C#".

ACCESSORIES ON REQUEST (TO BE ORDERED SEPARATELY)

- TCC-A (see page -): reduction sleeves.
- TCC-KS (see page -): clamping kit.
- TCC-KV (see page -): screws and clamping nuts.
- GN 990 (see page -): connecting tubes.



ELESA Original design



■ C9 RAL9005 ■ C33 RAL7040



Code	Description	d	L	B	f	l _s	s	C# [Nm]	F1* [N]	M1** [Nm]	⚖
600121-C9	TCC-CR-18-18-C9	18	65	29	34	21	M6	5	2150	17	41
600121-C33	TCC-CR-18-18-C33	18	65	29	34	21	M6	5	2150	17	41
600221-C9	TCC-CR-30-30-C9	30	100.5	45	54.5	27	M8	12	1350	21	123
600221-C33	TCC-CR-30-30-C33	30	100.5	45	54.5	27	M8	12	1350	21	123

Suggested torque for screw assembly.

* Resistance to tube pull out

** Resistance to tube rotation

Tube connectors