

TCC-A | Hole reduction sleeve

for TCC clamps, technopolymer



- 1
- 2
- 3
- 4
- 5
- 6
- 7
- 8
- 9
- 10
- 11
- 12
- 13
- 14
- 15
- 16
- 17
- 18**
- 19

MATERIAL

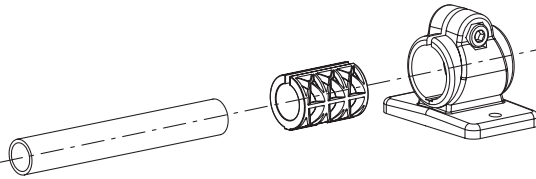
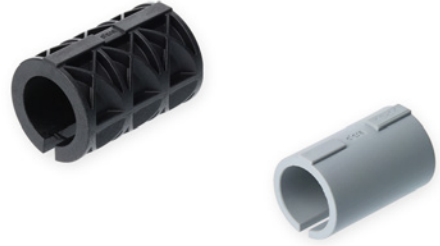
Glass-fibre reinforced polyamide based (PA) technopolymer, RAL 9005 (C9) black colour or grey RAL 7040 (C33) colour, matte finish.

FEATURES

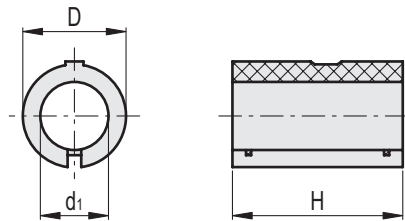
Hole reduction sleeve for tubes with diameter "d1" ± 0.2 mm. The hole reduction sleeve fits into the housing hole of the TCC clamps so that smaller diameter tubes can be used.

TECHNICAL DATA

The resistance values shown in the table were measured during laboratory tests at ambient temperature with the screws tightened to the maximum torque of 5 Nm for TCC-A-18 and 12 Nm for TCC-A-30.



ELESA Original design



C9 RAL9005 C33 RAL7040

Code	Description	Code	Description	D	H	d1	
600101-C9	TCC-A-18-12-C9	600101-C33	TCC-A-18-12-C33	18	29	12	5
600102-C9	TCC-A-18-14-C9	600102-C33	TCC-A-18-14-C33	18	29	14	4
600103-C9	TCC-A-18-15-C9	600103-C33	TCC-A-18-15-C33	18	29	15	4
600104-C9	TCC-A-18-16-C9	600104-C33	TCC-A-18-16-C33	18	29	16	3
600201-C9	TCC-A-30-20-C9	600201-C33	TCC-A-30-20-C33	30	45	20	15
600202-C9	TCC-A-30-25-C9	600202-C33	TCC-A-30-25-C33	30	45	25	10

Tube connectors

Resistance to tube pull-out (F1) and rotation (M1) with the hole reduction sleeves inserted in the different types of clamps

	TCC-AB		TCC-CR		TCC-SL		TCC-TB		TCC-TS	
	F1 [N]	M1 [Nm]	F1 [N]	M1 [Nm]	F1 [N]	M1 [Nm]	F1 [N]	M1 [Nm]	F1 [N]	M1 [Nm]
TCC-A-18-12	900	5	1250	5	900	5	900	5	900	5
TCC-A-18-14	1000	7	1650	10	1400	7	1050	8	1200	7
TCC-A-18-15	1000	7	1650	14	1400	10	1100	13	1200	11
TCC-A-18-16	1050	7	2000	14	1300	11	1200	14	1250	12
TCC-A-30-20	1000	8	1000	5	1000	6	1150	7	1000	6
TCC-A-30-25	1350	11	1300	7	1300	7	1600	7	1400	7

	TCC-AP		TCC-TP		TCC-AP-AP		TCC-AP-PB	
	F1 [N]	M1 [Nm]	F1 [N]	M1 [Nm]	F1 [N]	M1 [Nm]	F1 [N]	M1 [Nm]
TCC-A-30-20	1600	12	1600	12	1600	12	1600	12
TCC-A-30-25	2700	15	2700	15	2700	15	2700	15

	TCC-AP-PBF		TCC-AP-TP		TCC-TP-PB		TCC-TP-PBF	
	F1 [N]	M1 [Nm]	F1 [N]	M1 [Nm]	F1 [N]	M1 [Nm]	F1 [N]	M1 [Nm]
TCC-A-30-20	1600	12	1600	12	1600	12	1600	12
TCC-A-30-25	2700	15	2700	15	2700	15	2700	15

