

Steel

- 1
- 2
- 3
- 4
- 5
- 6
- 7
- 8
- 9
- 10
- 11
- 12
- 13
- 14
- 15
- 16
- 17
- 18

**MATERIAL**

Nickel-plated steel bracket.

Screws and centering bushings MM-CC (see page -) in black-oxide steel.

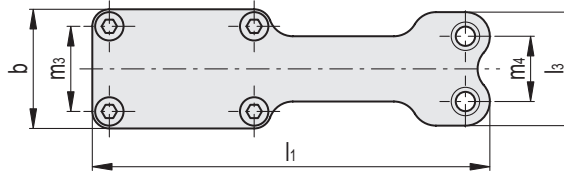
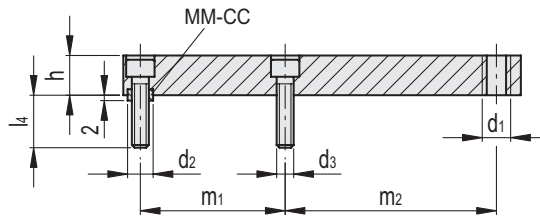
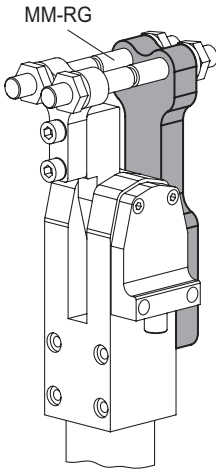
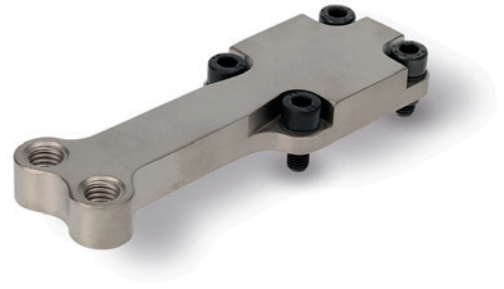
**FEATURES AND APPLICATIONS**

The brackets are compatible with the pneumatic fastening clamps MM-BI-NK (see page -).

These brackets are used in applications where it is necessary to effectively block a metal sheet

**ACCESSORIES ON REQUEST**

Clamping screws with ball terminal MM-RG (see page -).



Conversion Table			
1 mm = 0.039 inch			
b		l1	
mm	inch	mm	inch
32	1.26	98.5	3.88
42	1.65	140	5.51
52	2.05	168	6.61
62	2.44	192.5	7.58

METRIC

Code	Description	b	d1	d2 H8 / h6	d3	h	l1	l3	l4	m1	m2	m3	m4	△
MM.42020-NK	MM-FI-RG-20-NK	32	M8	7	M5	10	98.5	30	8	34	53	22	17	150
MM.42032-NK	MM-FI-RG-32-NK	42	M10	9	M6	14	140	40	8.5	51	74.4	30	23	410
MM.42040-NK	MM-FI-RG-40-NK	52	M12	11	M8	16	168	50	12.5	62	88.5	37	30	900
MM.42050-NK	MM-FI-RG-50-NK	62	M12	13	M10	18	192.5	60	12.5	71.5	102	44	40	1020

Toggle clamps