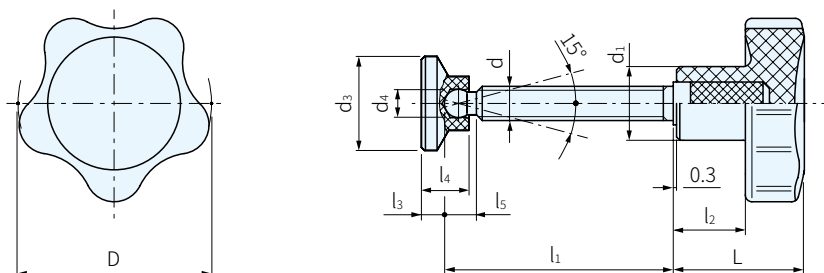




把手			螺絲		推力墊		
材質	顏色	處理	材質	材質	顏色	處理	
PA	黑	啞光飾面	SUS303	POM	黑	啞光飾面	

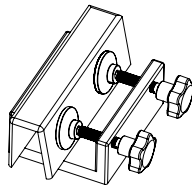


品號	描述	D	d _{6g}	L	d ₁	d ₃	d ₄	l ₁	l ₂	l ₃	l ₄	l ₅	質量	庫存
SELS-164001	VC.692/25 SST-p-M6×25-SV15	25	M6	20	12	15	4.5	25	10	3.5	7.5	5	16	•
SELS-164003	VC.692/25 SST-p-M6×35-SV15							35					18	•
SELS-164005	VC.692/25 SST-p-M6×45-SV15							45					21	•
SELS-164101	VC.692/32 SST-p-M6×25-SV15							25					27	•
SELS-164103	VC.692/32 SST-p-M6×35-SV15							35					29	•
SELS-164105	VC.692/32 SST-p-M6×45-SV15	45	31	•										
SELS-164111	VC.692/32 SST-p-M8×30-SV18	32	M8	22.5	14	18	6	30	12.5	4	9	6	29	•
SELS-164113	VC.692/32 SST-p-M8×40-SV18							40					31	•
SELS-164115	VC.692/32 SST-p-M8×50-SV18							50					33	•
SELS-164121	VC.692/32 SST-p-M8×30-SV21					30		31	•					
SELS-164123	VC.692/32 SST-p-M8×40-SV21					40		33	•					
SELS-164125	VC.692/32 SST-p-M8×50-SV21					50		35	•					
SELS-164131	VC.692/32 SST-p-M8×30-SV25					30		33	•					
SELS-164133	VC.692/32 SST-p-M8×40-SV25					40		37	•					
SELS-164135	VC.692/32 SST-p-M8×50-SV25					50		39	•					
SELS-164141	VC.692/32 SST-p-M8×30-SV32					30		37	•					
SELS-164143	VC.692/32 SST-p-M8×40-SV32					40		39	•					
SELS-164145	VC.692/32 SST-p-M8×50-SV32					50		41	•					
SELS-164151	VC.692/32 SST-p-M8×30-SV40					30		39	•					
SELS-164153	VC.692/32 SST-p-M8×40-SV40					40		41	•					
SELS-164155	VC.692/32 SST-p-M8×50-SV40					50		43	•					

品號	描述	D	d _{eg}	L	d ₁	d ₃	d ₄	l ₁	l ₂	l ₃	l ₄	l ₅	質量	庫存									
SELS-164201	VC.692/40 SST-p-M8×30-SV18	40	M8	26	15	18	6	30	14	4	9	6	44	•									
SELS-164203	VC.692/40 SST-p-M8×40-SV18							40					46	•									
SELS-164205	VC.692/40 SST-p-M8×50-SV18							50					50	•									
SELS-164211	VC.692/40 SST-p-M8×30-SV21							30					46	•									
SELS-164213	VC.692/40 SST-p-M8×40-SV21							40					48	•									
SELS-164215	VC.692/40 SST-p-M8×50-SV21							50					52	•									
SELS-164221	VC.692/40 SST-p-M8×30-SV25						30	48		•													
SELS-164223	VC.692/40 SST-p-M8×40-SV25						40	50		•													
SELS-164225	VC.692/40 SST-p-M8×50-SV25						50	52		•													
SELS-164231	VC.692/40 SST-p-M8×30-SV32						30	52		•													
SELS-164233	VC.692/40 SST-p-M8×40-SV32						40	54		•													
SELS-164235	VC.692/40 SST-p-M8×50-SV32						50	56		•													
SELS-164241	VC.692/40 SST-p-M8×30-SV40					30	54	•															
SELS-164243	VC.692/40 SST-p-M8×40-SV40					40	56	•															
SELS-164245	VC.692/40 SST-p-M8×50-SV40					50	58	•															
SELS-164251	VC.692/40 SST-p-M10×35-SV21					M10	31	18	21	8	35	17	4	10	7.5	56	•						
SELS-164253	VC.692/40 SST-p-M10×45-SV21										45					58	•						
SELS-164255	VC.692/40 SST-p-M10×55-SV21										55					60	•						
SELS-164261	VC.692/40 SST-p-M10×35-SV25										35					58	•						
SELS-164263	VC.692/40 SST-p-M10×45-SV25										45					60	•						
SELS-164265	VC.692/40 SST-p-M10×55-SV25										55					62	•						
SELS-164271	VC.692/40 SST-p-M10×35-SV32									35	60			•									
SELS-164273	VC.692/40 SST-p-M10×45-SV32									45	62			•									
SELS-164275	VC.692/40 SST-p-M10×55-SV32									55	64			•									
SELS-164281	VC.692/40 SST-p-M10×35-SV40									35	62			•									
SELS-164283	VC.692/40 SST-p-M10×45-SV40									45	64			•									
SELS-164285	VC.692/40 SST-p-M10×55-SV40									55	68			•									
SELS-164301	VC.692/50 SST-p-M10×35-SV21								50	M10	31		18	21		8	35	17	4	10	7.5	71	•
SELS-164303	VC.692/50 SST-p-M10×45-SV21																45					77	•
SELS-164305	VC.692/50 SST-p-M10×55-SV21																55					85	•
SELS-164311	VC.692/50 SST-p-M10×35-SV25																35					73	•
SELS-164313	VC.692/50 SST-p-M10×45-SV25																45					79	•
SELS-164315	VC.692/50 SST-p-M10×55-SV25	55	87	•																			
SELS-164321	VC.692/50 SST-p-M10×35-SV32	35	75	•																			
SELS-164323	VC.692/50 SST-p-M10×45-SV32	45	81	•																			
SELS-164325	VC.692/50 SST-p-M10×55-SV32	55	89	•																			
SELS-164331	VC.692/50 SST-p-M10×35-SV40	35	77	•																			
SELS-164333	VC.692/50 SST-p-M10×45-SV40	45	83	•																			
SELS-164335	VC.692/50 SST-p-M10×55-SV40	55	91	•																			

SP 特長

- ・適用強力鎖定組件
- ・由於止推墊，避免了螺柱與螺柱的直接接觸要鎖定的表面
- ・由於是耐腐蝕材料，不容易生銹

EX 使用例
 訂貨： 交期： 天

SELS-164001