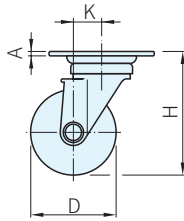
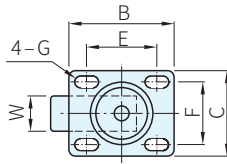
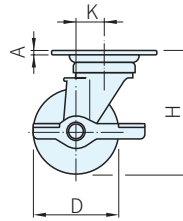
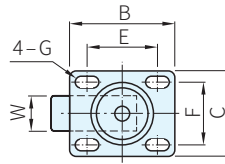




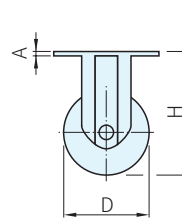
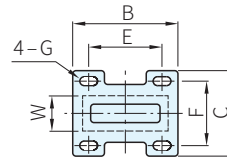
腳架	輪軸	輪子
材質	處理	型式
鋼	鍍鋅	尼龍套筒
		橡膠(R)



活動輪



側剎輪



固定輪

Type	品號	輪子材質	D	W	A	B	C	E	F	G	H	偏芯K	載重量(N)	質量(g)	庫存
活動輪	5578.4321	R	100	32	4	96	70	73	44	9×12	132	35	1000	1020	·
側剎輪	5578.4322													1100	·
固定輪	5578.4323													-	730

Te. 技術資料

· 請參考本單元(腳輪的選擇)

訂貨： - 交期： 天

5578.4321 - R

Ps. 備註

· 1N=0.101972Kgf