

GLASS DOOR HINGE GS-GH34-0CR-K For Inset Door

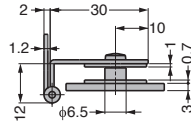
TEMPERED GLASS



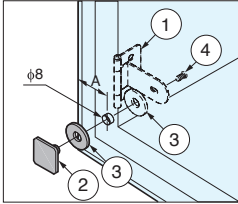
- Hinge for glass/acrylic doors.
- Round plate type GS-GH34-0CR also available

[Remarks]

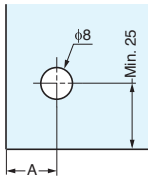
- Recommended for use in pairs.
- When mounting screws, use a screw loosening prevention agent.
- Load capacity is the value when using two hinges. For calculation conditions, please refer to INDEX



[Parts Composition]

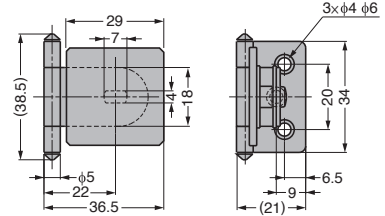


[Cut Out Dimensions]



Boring position changes with the glass thickness.

Glass Thickness	A
4	19
5	18
6	17



No.	Part Name	Material	Finish / Colour
①	Body	Steel	Chrome
②	Plate	Zinc Alloy (ZDC)	
③	Washer	PVC	Clear
④	Screw	Steel	Nickel

Item Name	Door Width	Door Height	Glass Thickness	Load Capacity N/2 pcs	Load Capacity kgf/2 pcs	Weight (g)
GS-GH34-0CR-K	Max.450	Max.700	4,5,6	39	4	34

※ Load capacity has priority over glass size.