

GLASS DOOR HINGE **GS-GH34-0** For Inset Door

TEMPERED GLASS

Passed 10,000 open/close private cycle test

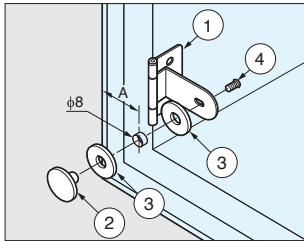


- Hinge for glass/acrylic doors. Square plate type GS-GH34-0CR-K also available.

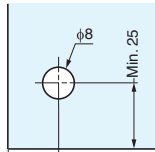
[Remarks]

- Recommended for use in pairs.
- Use screw loosening prevention agent when mounting screws .
- Note that scratch is conspicuous on black surface.
- Load capacity is the value when using two hinges. For calculation conditions, please refer to INDEX

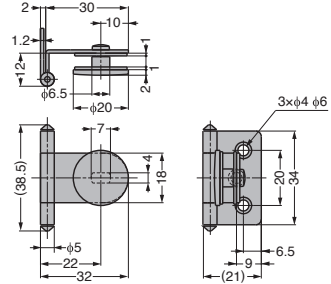
[Parts Composition]



[Cut Out Dimensions]



Boring position changes with the glass thickness.



		No.	Part Name	Material	Finish / Colour
Glass Thickness	A	①	Body	Steel	Chrome, Paint/Black, Gold, Clear
4	19	②	Plate	Zinc Alloy (ZDC)	
5	18	③	Washer	PVC	Clear
6	17	④	Screw	Steel	Nickel, Paint/Black, Gold, Clear

Item Name	Finish	Door Width	Door Height	Glass Thickness	Load Capacity N/2 pcs	Load Capacity kg/2 pcs	Weight (g)
GS-GH34-0CR	Chrome	Max.	Max.	4, 5, 6	39	4	23.5
GS-GH34-0BL	Paint/Black	450	700				

※ Load capacity has priority over glass size.