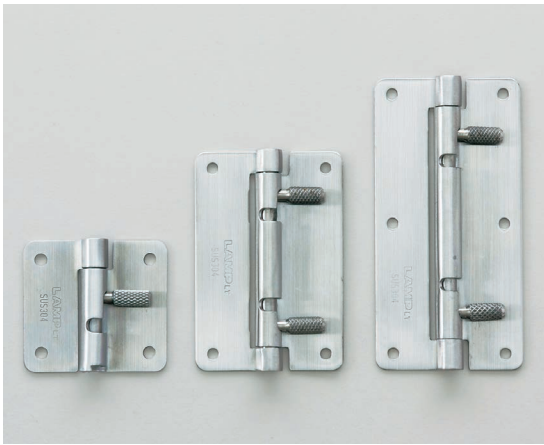


QUICK RELEASE HINGE GS-HG-OT Quick Installation Type

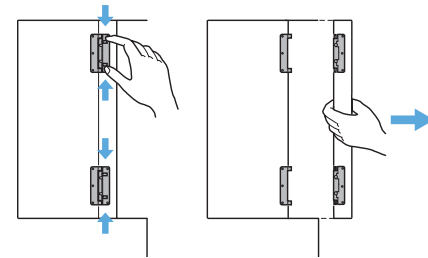
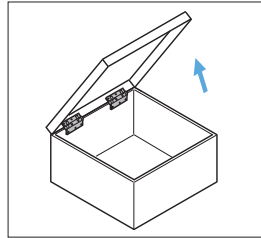


- Easy and quick to install/remove doors.
- Non-handed except for GS-HG-OTA45, GS-HG-OTB45.
- Can be used for upward-opening doors, top-opening lids and lateral opening doors.

[Remarks]

- Load capacity is the value when using two hinges. For calculation conditions, please refer to INDEX

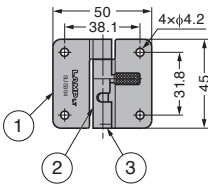
[Application Example]



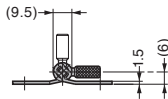
Retract the shaft and rotate it to the cabinet side.

Can be installed and removed in the front direction.

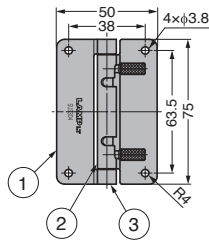
[Retracted Shaft]



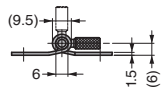
Shaft sliding state (when removed)



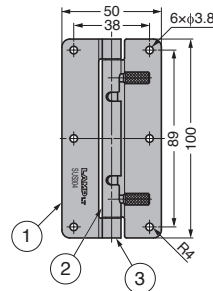
GS-HG-OTA45L



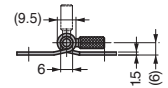
Shaft sliding state (when removed)



GS-HG-OTA75



Shaft sliding state (when removed)



GS-HG-OTA100

No.	Part Name	Material	Finish
①	Plate	Stainless Steel (SUS304)	Satin
②	Hinge Pin	Stainless Steel (SUS303)	Plain
③	Spring	Stainless Steel (SUS304)	

Item Name	Type	Holes	Load Capacity N/2 pcs	Load Capacity kgf/2 pcs	Weight (g)			
GS-HG-OTA45R	Right-handed	With screw holes	29	3	40			
GS-HG-OTB45R		Without screw holes						
GS-HG-OTA45L	Left-handed	With screw holes						
GS-HG-OTB45L		Without screw holes						
GS-HG-OTA75	Non-handed	With screw holes				59	6	70
GS-HG-OTB75		Without screw holes						
GS-HG-OTA100		With screw holes	69	7	90			
GS-HG-OTB100		Without screw holes						