

MONITOR BRACKET GS-TV

INSTRUCTION

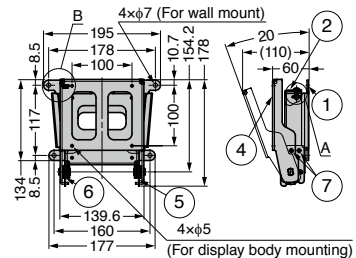
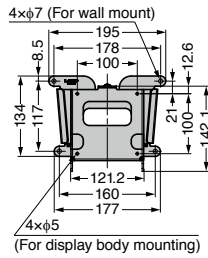
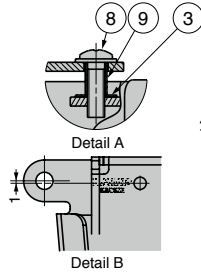


- Used to fix a small display on the wall.
- Fixed type (GS-TV-400SK) and adjustable type (GS-TV-410SK) are available.
- Adjustable type (GS-TV-410SK) can adjust the angle of the display about 20° from the vertical state to the front. Can hold the display at any angle within the adjustment range.
- Hole pitch (100× 100mm) of mounting bracket on the monitor side conforming to the VESA standard.

[Remarks]

- Do not apply load on small display when using.
- Durability varies depending on operating environment and frequency. Confirm the adaptability for the purpose of use in advance. For details on durability test, please contact local representative.

[Installation (Adjustable Type)]



No.	Part Name	Material	Finish / Colour
①	Bracket	Steel (SPCC)	Black Paint
②	Fixed Plate		
③	Fall-preventing Washer	PA	Natural
④	Adjustable Plate	Steel (SPCC)	Black Paint
⑤	Hinge R	Steel	Clear Zinc Chromate
⑥	Hinge L	(SPCC), etc	(Trivalent), etc
⑦	Countersunk head machine screw	Steel	Clear Zinc Chromate
⑧	Washer Faced Pan Head Screw	(SWCH)	Chromate (Trivalent)
⑨	Wrapped Bush	Steel (SPCC)	(Trivalent)

Item Name	Mounting	Type	Max. Monitor Weight kg/pc	Weight (kg)
GS-TV-400SK	Wall	Fixed	8	0.85
GS-TV-410SK	Mount	Adjustable		1.15