

# OVER THE TOP FLIPPER DOOR MECHANISM (W/ SOFT CLOSING) GS-OVN



Opening Direction	Item Name	Description	Door Width	Door Height	Door Thickness	Door Weight
 Over the Top	GS-OVN-3	Soft-close	Max. 1500	370~450	Min. 15	3~5 kg
	GS-OVN-5					5~7 kg

- Patented Lapcon mechanism controls door opening and closing softly and smoothly.
- Prevents from slamming shut and pinching fingers.
- Storing the door horizontally on the top board maximises space inside of the cabinet.

### [Specifications]

- Operating temperature: 0°C~40°C

### [Remarks]

- Be sure to read the "Cautions"
- 2 pcs of GS-C1315 rail (sold separately) are necessary for 1 cabinet. Select required rails depending on travel length.
- Ensure that the door centre of gravity is at the centre of door.

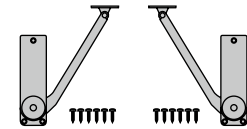
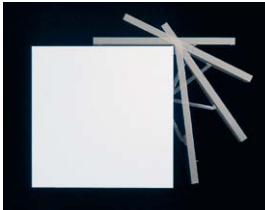
### [Parts Included]

- Binding head tapping screw 3.5x 16 (12 pcs) for 1 pair

### [Sold Separately]

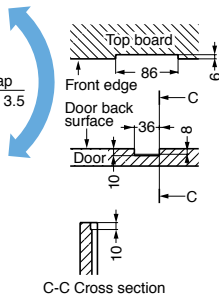
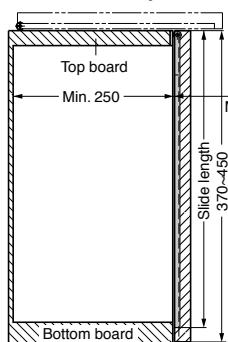
- GS-C1315 rail

### Video Link

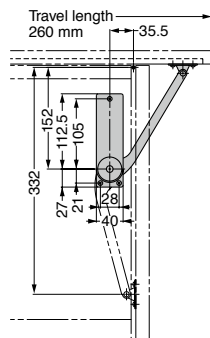


### [Cut Out Dimensions]

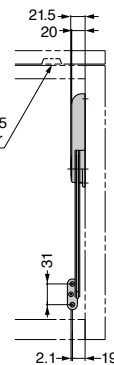
#### Cabinet cutaway view



#### Cabinet front



Rail GS-C1315 for flipper door



- Left is the installation drawing when the travel length of rail GS-C1315-14 is 260mm. Installation position changes with the travel length of rail.

### [Body] 1 pair

Item Name	Material	Finish/Colour	Door Weight kg	Door Width	Door Height	Door Thickness	Weight (g)
GS-OVN-3	ABS/	Nickel/Black	3~5	Max. 1500	370~450	Min. 15	510
GS-OVN-5	Steel		5~7				510